

Edition.

#01

Summer 2020

nest.

Born from a desire to inspire,
we invite you to immerse yourself
further in to our world of forever
design within the Nest brochure.

HM2 Boomerang Lounge Chair
from &Tradition

The wonderful thing about our design collection is there's a perfect item, a perfect collection, a perfect combination to suit each of us, our families and our lives. Design can be part of the memories we share, it has the power to enhance the everyday and most importantly, design combines to create the sanctuary that is your home. And home is where life happens.

Nest is your destination for design. Design to us is forever furniture. Purveyors of beautiful, iconic and ever-lasting designs; we believe it is better to buy once and buy well, than to buy something that will need to be replaced over and over again.

So, whether it's the elegantly aged leather lounge chair that you can sink into at the end of the day or the expertly crafted wooden dining table that has been the setting of many a family gathering; choose pieces that you will cherish and that you'd be proud to pass down through the generations.

These pages will take you on a journey through some highlights of the Nest collection. Putting the spotlight on a few of our favourite design icons, chatting with fascinating people and guiding you through how to shop more sustainably – we hope to inform and inspire so choosing great design is easy, and most of all fun.

Welcome to our world of forever design.



Christian

Christian Hawley
CEO and Founder



The home of forever furniture,
lighting and accessories.

Simple pleasures	4
We take a look inside the home of Adam & Katie Barclay.	
Design icon	18
Discover the story behind the iconic Carl Hansen Wishbone Chair.	
Green living	22
Embrace the joy of nature.	
Illuminate your home with style	28
Create a home with mood, ambience and warmth.	
Living well	33
Interiors that are good for us and the planet.	
How to choose sustainably	36
Spotlight on: nanimarquina	38
In conversation: Mr Aardal	40
Welcome home	42
Curate a home that's authentically you.	
Dining to delight	44
Curate your kitchen	46
The Nest sofa buying guide	48
Our top ten sideboards	50
Give the gift of great design	52
Unforgettable gifts for design lovers.	
From us... to you	54
How ordering at Nest works.	



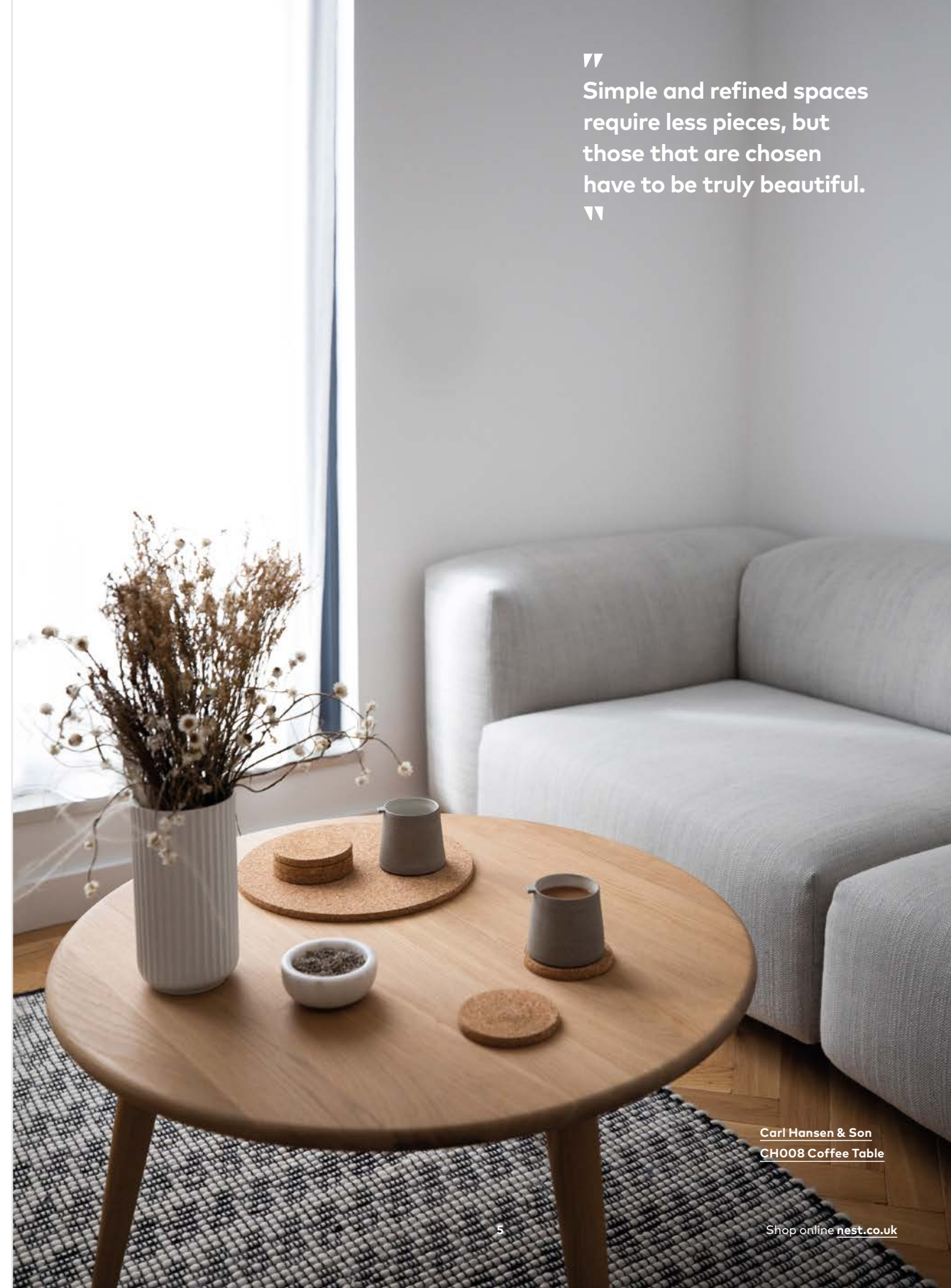
Real homes

Simple pleasures

Design enthusiasts and creative couple, Adam and Katie Barclay, have been loyal customers of ours over the years. Keen to explore the vision they have lovingly curated, we were welcomed into their home.



Simple and refined spaces require less pieces, but those that are chosen have to be truly beautiful.



Carl Hansen & Son
CH008 Coffee Table



Staple pieces of Nordic and Italian design fuse to balance minimalism with a sense of home.

Whilst the **Carl Hansen & Son CH25** draws the eye, support pieces with a more quiet elegance, like the **Japser Morrison Vitra Soft Modular Sofa**, allow for continuity without designs fighting for supremacy with the eye. A rule employed throughout the house.

Purposely placed
pendants are used to
define the space and
promote peace and calm.



Avid fans of **Hans J. Wegner**, the **CH25** is a chair of beauty and individuality – an heirloom in the waiting. “We felt we had to celebrate that and allow it to be the central figure within the room” Its intricate detailing commands attention.

Featured overleaf:

&Tradition Formakami Pendant Light Family JH3, JH4, & JH5.

To reduce visual noise, lighting is the only feature to fall above the eye line. This creates a calm environment that works with the unique architecture within the building by exaggerating the dramatic high ceilings.



An open plan dining space is lit ambiently with a family of **Flos IC Lights**.

"We both love the atmosphere that a softly diffused, warm light emits. Light like this almost has the same romance as candle light. As a photographer, I always search to light my images in a very similar manner, so it only feels natural to light my home in the same way."

”

We wanted to find pieces that had a rich history within design, but could also go on their journey within our homes for another 50 years.

”



Lighting to captivate

A joy to admire, the Flos IC S2 Suspension Light brings with it a sense of balance, sculpture and delicacy.

Featured overleaf:

Opting for timeless appeal with the ever-iconic Carl Hansen & Son CH24 Wishbone Chairs.

“There is something beautiful about a piece of design that can stay relevant since the late forties or fifties in a world where weekly change is a given.”



Materiality and construction

The **MG501 Cuba Chair** from **Carl Hansen & Son** plays to all the characteristics they cherish dear. Visually it appears light, both in weight and thickness. Light is able to pass through the structure easily, lessening the pieces visual impact in the room. The result is something elegant.

Adaptable designs are chosen for freedom and flexibility of use around the home.



Bedroom lighting was chosen for the quality of light produced, simplicity of design and graphic character.

Vitra Akari 10A Floor Lamp
by Isamu Noguchi.



Curate a home that reflects you

Connecting with customers and exploring their homes brings us joy as we champion creative vision. A home should represent you, who lives within it, and most importantly reflect how you wish to live.

If you have a vision for your home, discover our three tips to consider, as we learn more about Adam Barclay and his home.

1 — Think about your intentions for your space and the type of lifestyle you wish for it to promote. Adam and Katie clearly identified their intentions at the beginning.

"We both like simple and refined spaces that leave a lot of room for thinking and dislike living amongst too much visual noise. This meant when curating the rooms with items of furniture, we wanted less, but what we did buy had to be truly beautiful."

"We simply wanted to create an environment that had a calming effect on us and that worked with the architecture's strongest attributes. We felt the best way to create a calming space was to limit what was placed above average eye-line to exaggerate the height of the room, leaving the rooms feeling in some ways monastic."

2 — Establish if you notice commonalities in the types of design you appreciate. Ask yourself what qualities do you look for and play to these. Adam Barclay spoke passionately about the characteristics of the designs chosen for their home and the layout of the home itself.

"When searching or evaluating whether a piece is right for our space we often think about its materiality and construction first. We like pieces to be finished in natural materials like oak or ash. We gravitate towards pieces that look simple in their construction even if the joinery is actually very complex."

"One crucial element we craved for in the home itself: The ceilings. We happily passed on a property with more bedrooms so we could claim that space. For us, we find more space within a home inevitably fills up with furniture or objects acquired through life, but ceiling space is protected from such hoarding and can allow for an exceptionally peaceful and calm environment."

3 — Stagger your project and understand that the best things take time. A space offering a lifetime of enjoyment is a labour of love and evolves over time. Adam's love and interest in design was forged early on and has only grown in the last 10 years; Working alongside design collectors sporting an impeccable collection and enthusiastically sharing their knowledge. Starting with a first piece at 21 and adding to his collection over the years.

"When it came to the point where we could afford to invest in more pieces, it was not really a big choice, we both already knew what we wanted."

Discover more about both Adam and Katie's love for classic design and how their collection grew in our journal online.
nest.co.uk/inside-your-homes-adam-katie-barclay

With thanks to **Adam Barclay**
Photographer, Director and Set Designer



Design icon: Carl Hansen Wishbone Chair

Considered one of the most famous symbols of Danish furniture design, the CH24 or Wishbone Chair has been in continuous production since 1950. Now an icon, coveted for generations for its simplicity, organic lines and timelessness.

He may have designed more than 500 chairs during his lifetime, but Hans J. Wegner's Wishbone chair is considered by many to be his greatest. A long-time champion of natural materials and the integrity of joinery – it was his unparalleled craftsmanship and extraordinary sense of sculptural expression that earned him recognition as a pioneer of Danish Modernism.



Hans J. Wegner 1914 – 2007

Having discovered his love of working with wood very early in his life, Wegner's journey began as a cabinetmaker's apprentice before training at the prestigious Royal Danish Academy of Fine Arts in Copenhagen.

Progression came as an assistant to **Arne Jacobsen** and later opening his own office in 1943. Just a few years on Wegner was approached by **Carl Hansen & Son** who were looking for a partner to help extend their product range.

Over the ensuing years, the partnership between Wegner and Carl Hansen produced some of the world's most iconic furniture designs, including the **CH07 Shell Chair**, **CH20 Elbow Chair** and of course, the **CH24 Wishbone Chair**.

International inspiration

While the CH24 is Danish to its core, the inspiration for the design actually came from the Far East. Between 1943 and 1945, Wegner designed a series of chairs inspired by the thrones of Chinese Emperors – the 1949 Wishbone being the most enduring of these designs.

Crafted with precision

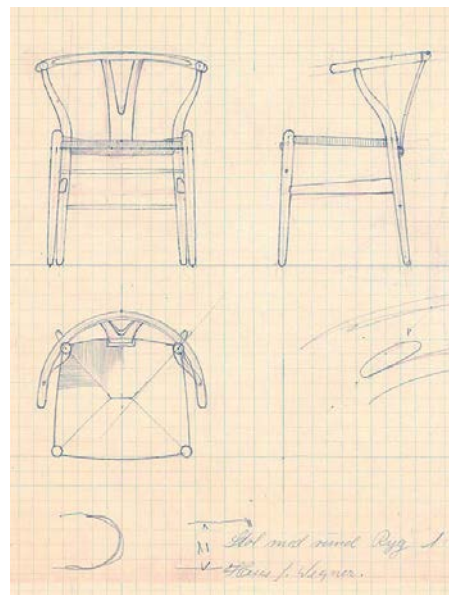
Every Wishbone chair is made by hand at the Carl Hansen & Son factory in Denmark, following Wegner's original specifications. Using only sustainable, high-quality Danish timber, they're comprised of 14 separate components and require over 100 individual processes to ensure they're chiselled, carved, sanded and shaped to perfection. Because of this, every chair takes around 3 weeks to make. It's worth the wait.

Scoring high for comfort

The paper cord seat is hand-tensioned for a smooth sit, and the steam-bent backrest aligns beautifully with the contours of the body for comfort and support.



Discover the Wishbone Chair and full range of Carl Hansen & Son designs at nest.co.uk/carl-hansen-son



“
If a chair is to have no backside,
it should be beautiful from
all sides and angles.
”

Hans J. Wegner





Green living

There are few things that bring as much joy as the shapes, textures and colours of nature. Whether outside or inside, surrounding yourself with greenery is one of the fastest ways to improve your health and happiness.

Vitra Panton Chair — star of the 1960's, this design offers flexible comfort and catches eyes in any space or garden.

Chairs that invite relaxation, tables perfect for gatherings and portable lighting to extend your evenings — our range of outdoor furniture and accessories lets you get closer to nature.



HAY Palissade Chair and Cone Table Round — graphic, versatile and crafted from strong durable steel. **HAY PC Portable Table Lamp** — multipurpose and light, ideal for indoors or out.



nest loves

The simple lines of the **HAY Palissade Collection** are eye-catching, practical and beautifully stylish. Perfect for relaxing in the garden with a book, or for being part of a larger, social outdoor environment — the range of pieces and contemporary colours available make this a truly versatile collection that can be tailored to your chosen space.

Available in four, complementary colours:



Shop our full collection of Outdoor Furniture at nest.co.uk/furniture/outdoor



Discover the **HAY Palissade** at the Stirling Prize nominated **YSP Weston Visitor Centre** — supplied by **Nest Contracts**.



HAY
Palissade Lounge Chair Low
Olive



HAY
Palissade Table 82.5x90
Olive



HAY
Palissade Lounge Sofa
Olive



HAY
Palissade Armchair
Olive



HAY
Palissade Table 170x90
Olive



HAY
Palissade Cone Table Square
Olive

- 1 — Ferm Living Plant Box.
- 2 — Ferm Living Plant Box Round.
- 3 — Ferm Living Bau Pot.



Bring the outside in...
You don't need a large home or
garden to make room for nature.
Let your greenery take centre stage in
your interiors with planters, boxes and
stands that mix style and versatility.



Our tips to bring life into your spaces

Big impact on a small footprint, plant stands use height to layer your greenery.

Filled with flowers or standing alone, the best vases always look elegant.

Versatile pieces such as portable lighting, planters and storage are a great way to merge outdoor/indoor living.



- 4 — Menu Wire Plant Pot. 5 — Fritz Hansen Ikebana Vase, Objects Vase and Earthenware Jar Vase. 6 — Marset FollowMe Portable Table Lamp.
 - 7 — NEW Ferm Living Plant Box Two Tier.
- All available in a range of colours and sizes to suit your style.

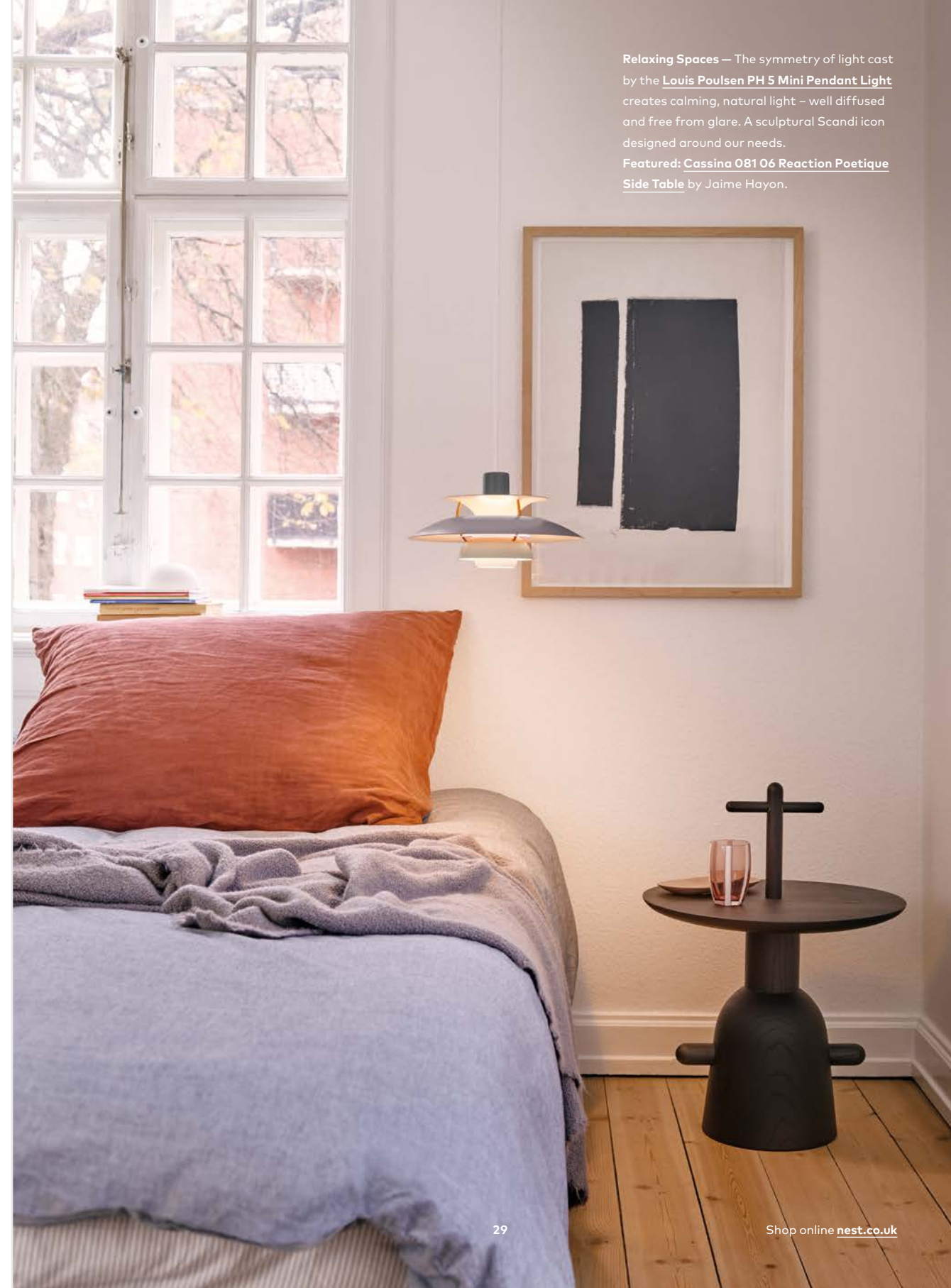


Illuminate your home in style

Great lighting is fundamental to your home's interior. As well as providing illumination, it creates a distinctive mood, ambience and warmth.

Lighting is essential for our quality of life, affecting our mood, energy levels and even our circadian rhythms. That's why it's important to get it just right.

To find out more — read our lighting buying guide at nest.co.uk/lighting-buying-guide



Relaxing Spaces — The symmetry of light cast by the **Louis Poulsen PH 5 Mini Pendant Light** creates calming, natural light – well diffused and free from glare. A sculptural Scandi icon designed around our needs.
Featured: **Cassina 081 06 Reaction Poetique Side Table** by Jaime Hayon.

See your home in a new light.
From sculptural shapes to iconic,
mid-century designs — discover our
captivating collection of pendant lighting.

Ambient

Ambient light acts as a replacement for natural light in our homes, often in the form of pendant lights — positioned centrally for even illumination. Look out for glare reducing shade systems.

Statement

Once you have the basics sorted, you can start to think about adding statement lighting to your interior for that 'wow' factor. Don't be scared to show off your personality.



Shop our full collection of Pendant Lighting at nest.co.uk/pendant-lights



A bestselling design for a reason. The clever, configurable shade of the **Gubi Multi-Lite Pendant Light** can rotate its shape and in turn, the direction of light, within one simple move. The result — an alluring design that gives you multiple options for illuminating your space.



Real homes

"When I moved into my new home I added the **PH 5 Pendant Light** in Classic White as I had admired it for some time. I like to fill my home with designs that make me happy as I spend a lot of time there. It compliments my style and I'll forever find it beautiful (plus it's a wise investment for the future)."

MiKyeong Yoon



Nest loves — A distinctive design that's captured our hearts. The **Menu Hashira Cluster Pendant Light** oozes elegance and calm, creating beautiful channels of light.

Top Pick Pendants



&Tradition

Flowerpot VP1 Pendant Light



Louis Poulsen

PH 4/3 Pendant Light



Herman Miller

George Nelson Bubble Crisscross Saucer Pendant Lamp



Gubi

Semi Pendant Light Black



Petite Friture

Vertigo Pendant Light



Flos with Sarfatti

Model 2065 Suspension Light



Muuto

Fluid Pendant Light



Mooodi

Random II Suspension Light Black



Be in the know

LED bulbs

Using up to 90% less energy than incandescent bulbs, LEDs are the most efficient form of illumination. They give a warm light and last the longest of any bulb on the market.

IP ratings

Ingress protection ratings measure the degree of protection a light source has against particles and water. Look out for ratings of IP44 or above for use outdoor or in bathrooms.

Kelvins

This is how a bulbs colour temperature is measured. The higher the kelvin, the 'cooler the light' — 2,700 is a good value for residential interiors.



Experience life in full colour

Marset Dipping Pendant Light — Taking centre stage in any interior space, this colourful globe is defined by an alluring gradient of colour. Alongside our extensive collection of pendant lights, discover iconic wall lights, table lamps and floor lamps at nest.co.uk/lighting



Living well

We believe in filling our homes with designs that are not only good for us, but good for the planet too. Join us to discover how your interiors can help you to live well.

At Nest, we only choose designs that we believe have longevity, so you know when you buy from us, your designs should last a lifetime.



nest loves

Nikari April Tables and
December XL Lounge Chair Leather.

Finnish brand Nikari are paving the way in furniture design for sustainable thinking and practise. From their chosen base next to a renewable energy hydro plant, locally sourced timber from sustainably managed forests, to recycled packaging and eco-friendly surface treatments — Nikari bring us high-quality forever furniture.

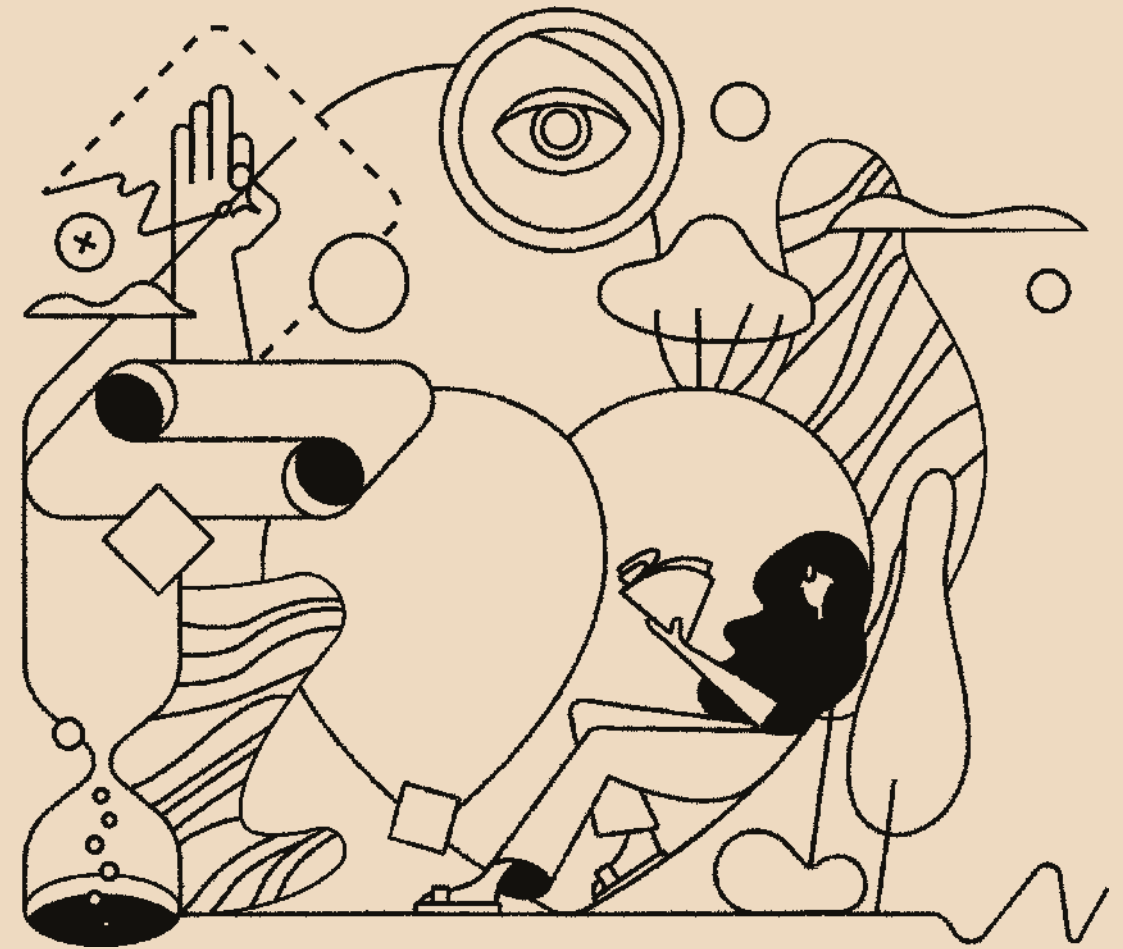
How to choose sustainably



Defining sustainability isn't an easy task. No matter how sensitive your material choice is, how eco-friendly your production methods are or how recyclable your products are – if products are being created with fashion in mind, not designed to be a long-term investment – you can't call them sustainable.

At Nest, we only choose designs that we believe have longevity, so you know when you buy from us, your designs should last a lifetime.

To help you begin the journey towards sustainable design, we've created a checklist of points that contribute towards a product or companies' sustainability. We can't possibly list every green option, but we can give you an idea of the basic things to look out for. From responsible production processes to environmentally friendly material choice, we put the spotlight on how to choose inherently sustainable designs.



Are you aware of your furniture footprint?
The three pillars of sustainability with points to look out for:

1. Economic

- Origin of resources
- Ecological economic structures
- Ability for repair
- Timeless design

2. Ecological

- Longevity
- Waste avoiding design
- Low pollution design
- Disposal friendly design

3. Social

- Fair work environments
- Respect for equality
- Comprehensive transparency

For more information on the sustainability of our products, you can contact our dedicated product specialists, who would be happy to talk you through the information. Simply call +44 (0)114 243 3000 or email info@nest.co.uk



Spotlight on: nanimarquina

Established by Nani Marquina in 1987, this Spanish design company create lovingly handcrafted rugs. Driven by a desire to be unique, nanimarquina work with both international designers and local artisans to create one-of-a-kind rug designs.

“
For me, wellbeing is being
conscious of the product’s impact
on people: not just on the
end-user, but also the people that
make it and on the environment.
That’s how we’ve always
approached design in my studio.
”

Ilse Crawford

Designs for wellbeing

In an industry that can be a major polluter, nanimarquina has joined forces with Ilse Crawford to create a collection that works for good. Crafted from Afghan wool, nettle, jute, linen, Tussar silk and organic cotton – the Wellbeing collection was designed to have the least negative impact possible on its users, producers and the environment.

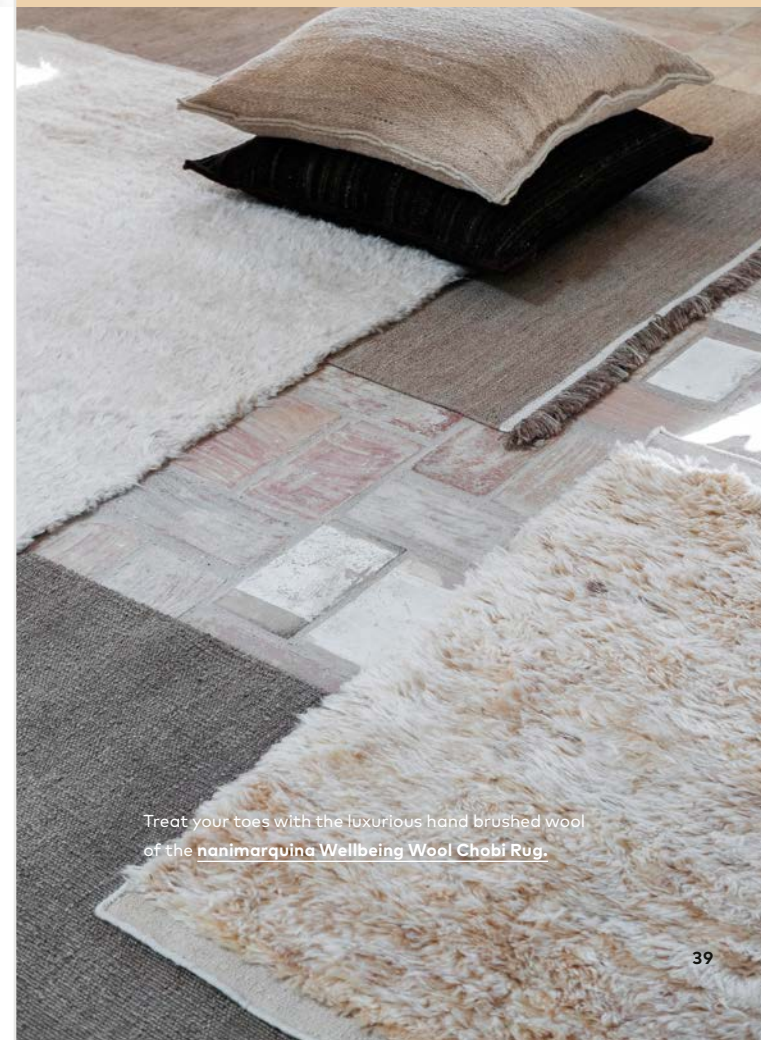
Made from hand spun, local fibres and using no bleach or dyes – Ilse Crawford identified these four criteria as ‘pain points’ – areas within the design process which might have the greatest impact in terms of limiting abuses within the supply chain and cutting down on the environmental damage caused by chemical dyes entering the water system.

The result is a warm and tactile rug collection that showcases the beauty of natural materials and is inherently sustainable in its production. What’s not to love?



Discover more designs
from nanimarquina at
nest.co.uk/nani-marquina

All quotes taken from Ilse Crawford’s article
within issue #22 of Disegno magazine.



Treat your toes with the luxurious hand brushed wool
of the [nanimarquina Wellbeing Wool Chobi Rug](#).

Curate and personalise with adaptable shelving,
1— String Pocket Shelving Walnut.
 Choosing a statement design that you will never
 stop appreciating can bring a lifetime of joy,
2— Louis Poulsen Artichoke Suspension Light.
 Mix and match timeless furniture for
 a more personal home, tailored to you,
3— Fredericia Soborg Chair.
4— Carl Hansen CH24 Wishbone Chair.
5— Carl Hansen CH23 Dining Chair.
6— Fredericia Spanish Dining Chair.



In conversation: Mr Aardal

Inside the home of a design aficionado

A timeless design enthusiast, Mr Aardal's beautifully curated home is filled to the brim with iconic designs. We caught up with the Norwegian Instagrammer to see what influences his timeless interiors.

On Instagram, your beautifully curated Scandinavian style home has been gaining a lot of attention. Can you tell us a little bit more about what started your love for interiors?

"My love for interiors started about 12 years ago after I started to work with some local architects. At that time, I did lighting planning for private customers and they had a thing for the Arne Jacobsen Eklipta lamp. This sparked my curiosity and led me on to Poul Henningsen, Hans J. Wegner, Kaare Klint, Poul Kjærholm, Børge Mogensen and so on."

"It didn't take long before I had my own Eklipta. There was something about the design and the weight of the lamp also gave a sense of quality. After that I went on to a PH5 lamp and an AJ wall lamp – I was hooked! From there it evolved into furniture from the same group of Danish designers. There was no turning back..."

You are a collector of design classics (especially chairs!) – what is it that draws you to Danish design?

"There is something truly unique about the golden age of Danish design, 1940–1960. The furniture was modern, minimalistic and even timeless. A chair wasn't just a chair anymore, it was a mix between good, functional furniture and figurative art. Usually made from solid wood and natural materials, this furniture could last a lifetime."

When choosing timeless furniture for your home, what qualities do you look for?

"I'm a big fan of solid wood, especially oak. It's a hard wood, easy to sand you can even get different finishes like oils etc. Wood is everlasting if you treat it right. I try to ignore trends in expensive furniture and stick to furniture that will fit in most interiors – for me this works as an interior base. This way I can change it up by adding or removing colours and smaller accessories."

Read the full interview at nest.co.uk/in-conversation-mr-aardal



Organic shapes that cocoon and invite you to relax at the end of the day are our favourite. We suggest the [Lily Chair](#), [Egg Chair](#) or [Swan Chair](#) by [Fritz Hansen](#).

Welcome home

At Nest, we believe your home should be a place that you can't wait to return to at the end of the day. So indulge in comfort, invest in a touch of the timeless and create your very own sanctuary. After all, there's no place like home.

Dining to delight

The perfect dining table is not what makes a home, but it certainly helps set the scene for the memories that do.



Nest loves

Long, cosy dinners require a chair where comfort is key. Our choice — the **&Tradition In Between Chair SK2 Upholstered**.

Featured: **&Tradition In Between SK4 Dining Table** White Oiled Oak & **Blown SW3 Pendant Light**.

The **In Between** dining range from **&Tradition** has been designed to fit comfortably into any setting, just like the person using it.

Merging man and machine by combining classic wood turning techniques with compression moulding – designer **Sami Kallio** has created a collection that showcases Nordic craftsmanship. Boasting a sturdy structure that is also surprisingly light, the SK dining range will blend seamlessly into any space with Scandinavian simplicity.

We love that due to a wide range of sizes, shapes, wood finishes and upholstery options – it's so easy to personalise your combination to suit you.



Discover the full **In Between Collection** at nest.co.uk/andtradition



Celebrate dining

A place for conversation, laughter and spending time with your loved ones – eating dinner alongside your friends and family has been shown to have some serious benefits. Studies have shown that sharing mealtimes is great for our mental health, helps us to fight obesity and even helps children to do better at school – we think that's pretty clever!



&Tradition

In Between Chair SK2
Upholstered / Smoked Oak



&Tradition

In Between SK5 Dining Table
Smoked Oak



&Tradition

In Between SK3 Dining Table
Black Lacquered Oak



&Tradition

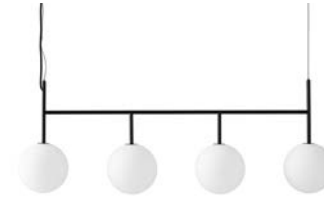
In Between Chair SK1
Black Lacquered Oak

Nuura Miira 4 — Contemporary chandelier with an Art Deco design. Arrange in pairs positioned over a kitchen surface. **HAY Revolver Stool** — Provides 360° rotation and available in three colours.

Curate your kitchen

The place for the daily debrief, spontaneous family gatherings and exploring the flavours of the world — the kitchen really is the heart of the home.

Our selections Over-the-counter lighting



Menu
TR Bulb Frame Suspension Light



Foscarini
Aplomb Suspension Light
Available in a range of colours



Northern
Unika Pendant Light – Grey

Contemporary bar stools



HAY
About a Stool AAS32



Muuto
Nerd Bar Stool



&Tradition
Pavilion AV9 Bar Stool
Oak

The finishing touches



Look at spotlighting differently with **ANTIDARK**.



Enjoy refined kitchen hardware from **Buster & Punch**.



Curate and finish with accessories from **Ferm Living**.

Sofa Buying Guide

Sofas are the focal point in any living space so it's important you choose right.

Relaxed living

Enticing you with its curves, the **Rico Three Seater Sofa** from **Ferm Living** is the epitome of contemporary comfort. With luxury brushed fabrics, a spacious seat and unique rounded profile, the Rico offers all you need in a family sofa. Complete the look with the **Arum Floor Lamp**, **Table Lamp** and **Podia Coffee Table**.

Our buying guide will take you through all the practicalities of investing in forever furniture, giving you the confidence to choose the perfect items for your home.

Choosing a new sofa is a big investment and a decision that will be with you for many years to come, so it's worth spending the time now firming up your needs.

Our top tip: measure twice, buy once

Christian, our CEO, swears by this interior mantra. Carefully measure the area where you want your new sofa to sit, including the length and depth to avoid delivery day regret. To help you get a feel for how it could look in certain positions, try marking out areas with masking tape or newspaper sheets.

Have a quick walk around your home and note any areas that might be problematic for delivery, like narrow hallways, low ceilings, tight corners or unforgiving staircases. The diagonal measurement between the bottom rear corner of your sofa and the top of the arm is crucial, as this represents the minimum width of the doorway that the sofa will fit through. Be sure to check these dimensions against your access route before buying.



Read the full guide at nest.co.uk/sofa-buying-guide



What type of sofa is right for you?

Two-seater sofas: the small space solution

Compact but perfectly formed, two-seater sofas are ideal for smaller spaces, like small living rooms, bedrooms and snugs. They often come with either one long or two seat cushions.

Three-seater sofas: a popular and versatile choice

Three-seater sofas are our most popular sofa type. They're spacious, have plenty of room to get comfortable, and come with either two or three seat cushions.

Modular sofas: complete flexibility

Modular sofas offer the ability to change things up. You can create a combination that works for you, then adapt it as your needs alter. Modular sofas tend to be larger than three-seater sofas so are a great choice for open-plan areas.

Corner Sofas: perfect for lounging

Corner sofas make relaxing easy. They're roomy enough for two people to put their feet up and can accommodate a number of guests. They make a great choice for social spaces as the corner formation encourages conversation.

Sofa beds: ideal for guests

Sofa beds look and act like a normal sofa during the day but transform into a bed at night. They're ideal if you have lots of guests, or if your home doesn't have a spare bedroom.

Our top 10 sideboards

From simple Scandinavian delights to quirky statement designs, our selected sideboards are the perfect match for your home.



nest loves
The epitome of Scandi simplicity,
Northern Hifive Media Unit



Best of the rest



Punt
Sussex Sideboard SSX402
Super-Matt Oak



Ferm Living
Haze Sideboard
Black



Zeitraum
Low Sideboard
Oak



Skagerak
Jut Cabinet
Black Marble



Warm Nordic
Be My Guest Sideboard
Natural Oak



Magis
Theca Sideboard
Natural Walnut top



Anderson
S6 Sideboard
Oiled Oak/Multicolour Front



Punt
Stockholm Sideboard Small
Dark Stained Walnut



Muuto
Enfold Sideboard Low
Oak/Grey



Read the full article at nest.co.uk/top-10-sideboards
For help and advice on finding the perfect sideboard
for your home, please email info@nest.co.uk,
call +44 (0)114 243 3000 or get in touch on [Live Chat](#).



Give the gift of great design

1 — Vitra Sunburst Wall Clock, a mid century classic, designed by George Nelson in 1949 and available in four colours. 2 — Vitra Wooden Doll No. 9, by Alex Girard with over 20 figures to collect. 3 — Louis Poulsen Panthella Table Lamp, designed by Verner Panton, perfect for a side table, bedroom or hallway.

Unforgettable gifts that stand the test of time, our collection of unique designs are sure to be treasured for years to come.



Menu
Echasse Vase



Vitra
Eames House Bird Walnut



Menu
Carrie LED Table Lamp



Ferm Living
Bau Pot – Warm Grey



Menu
Bottle Grinder – Walnut Lid



Vitra
Night Desk Clock

Each with a surprising story, our iconic gift selection makes the perfect choice for the person that has everything. Why not treat your loved ones to something special?

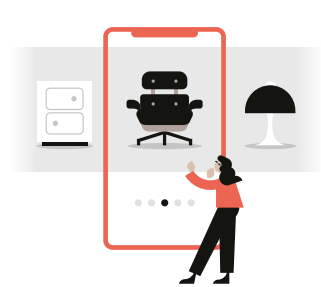


Browse gifts by category online at [nest.co.uk/gifts](https://www.nest.co.uk/gifts)

From us... to you

Great design is most definitely worth the wait.

Your order journey



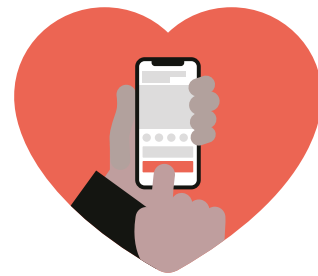
1

Browse and be inspired by our collection of furniture, lighting, home accessories and gifts, online at nest.co.uk



2

Having trouble deciding? Talk to our experts if you need any help with choosing, specifying or customising our products.



3

With just a few clicks, place an order for your chosen piece of forever design. It's as simple as that.

Made to order

After something a bit more bespoke? Many of our products are made to order, meaning you can specify finish, size & colour to suit you. This takes a little longer but we think great design is always worth the wait! Email our sales team at info@nest.co.uk for more information on made to order products.

In stock & ready to ship

We stock up on your favourites to make ordering with us quicker. Discover our range of in-stock furniture, lighting and accessories at nest.co.uk/in-stock



4

If your product is being made to order for you, our experienced brands craftspeople will begin manufacturing your product.



5

Your product will then be shipped to Nest with updates of progress OR if we already have your product in-stock it will be picked from our UK warehouse.



6

Wherever you are in the world, we will contact you to arrange a time to deliver your products, that works for you.

Reasons to shop

We are purveyors of beautiful, iconic, ever-lasting furniture. We care about what we sell and the service we provide to you.

We're independent, passionate and dedicated
We aren't a big corporate machine. Chat to a member of our committed personal customer service team who will love what you're buying as much as you do.

You'll be spoilt for choice
Our enviable collection of furniture, lighting, home accessories and gifts means there's something for everyone. The hardest part is in the choosing.

We deliver worldwide
We deliver to over 100 countries and aim get your products to you in 2-9 working days, depending where you are in the world.

Our experts are on hand
Our dedicated, professional specialists are on hand, Monday to Friday, 9am till 5pm (GMT) to help with any product advice, service questions or queries.

We guarantee authenticity
All of our products are the genuine article and epitomise quality and fine craftsmanship. Nothing we stock is fake, imitation or sub standard.



We're here to help

Nest.co.uk is open 24/7 and our knowledgeable sales team are available 9am~5pm (GMT) Monday to Friday.

Talk to us

+44 (0)114 243 3000

Live chat

Our experts are on hand at [nest.co.uk](https://www.nest.co.uk)

Email

info@nest.co.uk

Visit our showroom

9 Parkway Rise
Sheffield S9 4WQ
United Kingdom

Inside inspiration

Sign up for our emails and enjoy hearing about all things design.

Did you know?

Hospitality | Commercial | Residential

Sourcing great design made easy. With the worlds best brands under one roof and a choice of 20,000 products, Nest Contracts supply premium design with quality guaranteed. With over 15 years of experience, our industry specialists are on hand to help you furnish your next interior design project.

To discover our ever expanding collection and competitive trade prices, visit the Nest Contracts portal at [nest.co.uk/contracts](https://www.nest.co.uk/contracts)



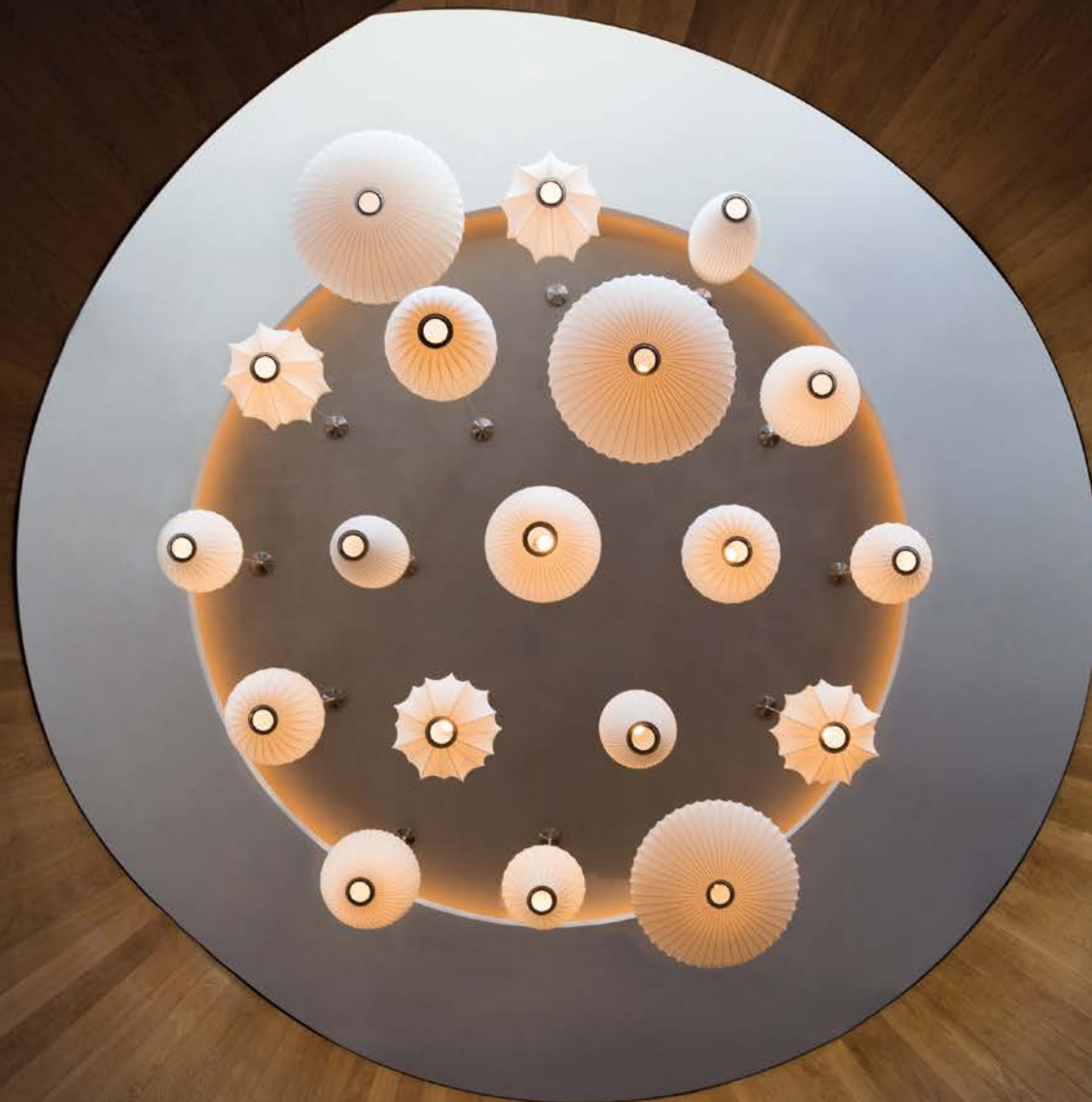
nest.
CONTRACTS

Thank you

Real homes Adam & Katie Barclay, Founders of [@in_grid_studio](#) [@in_grid_spaces](#),
MiKyeong Yoon — Photography [@YoonMiky](#), Thomas Aardal — Photography [@mr.aardal](#)
Feature Photography Max Hawley — [@maxhawley94](#)
Support Photography Vitra, &Tradition, HAY, Ferm Living, GUBI, Fritz Hansen, Flos,
Northern, Carl Hansen, Louis Poulsen, Marset, Nuura, nanimarquina, Nikari, Menu.
Design Alun Edwards — [@AlGinzberg](#)
Printed by B&B Press Limited — [bbpress.co.uk](https://www.bbpress.co.uk)



The home of forever furniture,
lighting and accessories.



George Nelson Bubble Lamp Collection
from [Herman Miller](#)

**Buy once, buy well
and treasure forever.**

Discover our world of
forever design at nest.co.uk



**Your
design
destination**