

Edition.

#3
20th Anniversary
Special

nest.

Twenty years – a significant milestone marking an incredible journey that Nest has taken through the world of design. As we celebrate this momentous occasion with Edition #3, we reflect on the two decades, filled with gratitude for the unwavering support you've given us along the way.



A handwritten signature of Christian Hawley in a cursive script.

Christian Hawley
CEO and Founder

Nest's evolution mirrors the dynamic changes in design and lifestyle during the twentieth century. Design's power to shape our homes and lives is awe-inspiring. More than just furniture, it's about crafting spaces that resonate with our identities and bring us joy.

At Nest, we champion forever furniture and lighting – the timeless pieces that transcend generations. Our curated collection embodies this philosophy, inviting you to invest in pieces that not only endure but also become a part of your legacy, carrying stories and sentiments through time.

Edition #3 digs deeper into these ideals, spotlighting our top twenty iconic designs, delving into inspirational guides, and advocating for sustainability, which is why this edition is digital only. Our goal remains unwavering: to inform and inspire, making it effortless for you to make exceptional design choices for your home and workspaces.

Thank you for being part of Nest's journey. Here's to another twenty years of redefining your nest through the essence of design.

We are passionate
about great design,
both for you and your
home or workplace.



Contents

Twenty Classics	4
Twenty iconic designs, showcased in the brutalist beauty of Park Hill.	
Design icon	28
Discover the story behind the iconic House of Finn Juhl Whisky Chair.	
Affinity through design	32
Good design can greatly influence our emotions, behaviours and overall well-being.	
The art of Ikebana	46
Celebrate nature's beauty with us by exploring centuries-old art of ikebana.	
Providing playful design	48
Help with creating your little one's haven.	
Connecting through colour	52
How to add a dash of colour to your spaces.	
The Muuto perspective: Colour	58
Talking colour with Muuto's Silke Foged.	
Materials	62
Our top ten: Marble	64
In production: Audo Copenhagen Plinth	66
Inside your homes	68
We visited a London home to see the results of collaborating with the Nest interiors team.	
Brands making moves	80
A well-deserved focus on Artek's 85 years!	
Pillars of sustainability	82
Our Contract Services team at work	84
The transformative power of design.	
Give the gift of great design	92
Unforgettable gifts for design lovers.	
20 Years of Nest	94
Visit our new showroom	96
Located at Park Hill in Sheffield, this is your design destination in the North.	
A space to learn and explore in	110
Bringing you great design we believe in.	
Interior advice	114
Here to help you find your own style.	



Design Classics

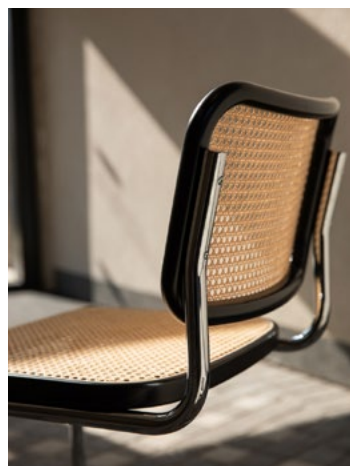
Twenty classics

**Discover Nest's hand-picked
selection of twenty iconic designs,
showcased against the backdrop of
the beautifully brutalist Park Hill.**

**Each piece tells a story of design
excellence, thoughtfully captured
to inspire, and elevate.**



Photography: Max Hawley
With thanks to Fern Merrills
and Arran Cross



Cesca Chair By Knoll Studio

1928

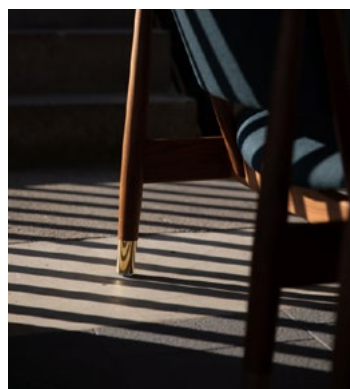
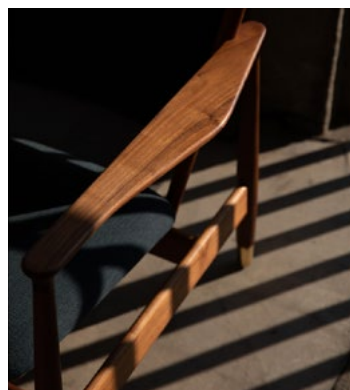
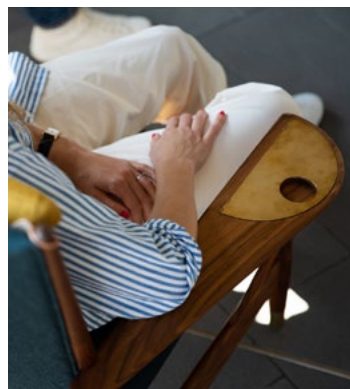
The Knoll Cesca Chair is a long-time classic from the imagination of designer Marcel Breuer – a masterpiece of modernist design.

VB1 Little Petra Lounge Chair By &Tradition

1938

Originally designed by Viggo Boesen in 1938, &Tradition's Little Petra is a distinguished and inviting low lounge chair.





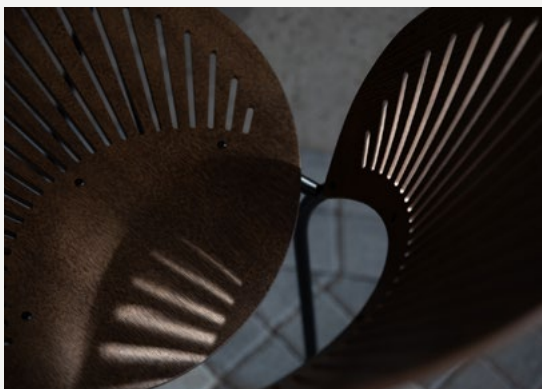
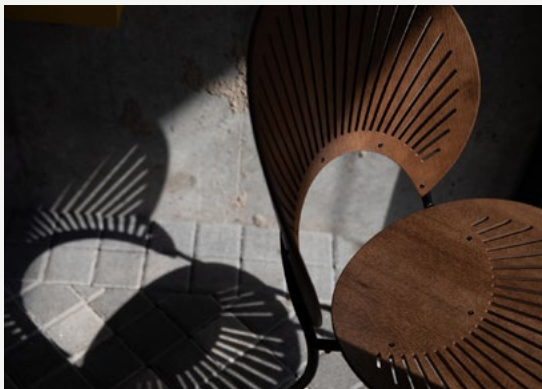
DESIGN ICON

Learn more about this selected classic on page 29.

Whisky Lounge Chair By House of Finn Juhl

1948

First produced in 1948 the Whisky Lounge Chair is one of the boldest designs from the archives of the House Of Finn Juhl.



Trinidad Dining Chair By Fredericia

1993

Inspired by the elaborate Gingerbread facades spotted on the Caribbean Islands, Danish designer Nanna Ditzel developed the Trinidad Chair for Fredericia.

Eames Lounge Chair & Ottoman By Vitra

1956

The Vitra Eames Lounge Chair, one of the best-known creations of Charles and Ray Eames, re-imagines the classic English Club Chair.



DESIGN ICON

Not only is the chair stylish, but it is also functional and durable, designed to last generations.



CH24 Wishbone Chair By Carl Hansen & Son

1949

Hans J. Wegner's CH24 Wishbone Chair is a Scandinavian design classic, embodying simplicity and craftsmanship within the CH24 Collection.



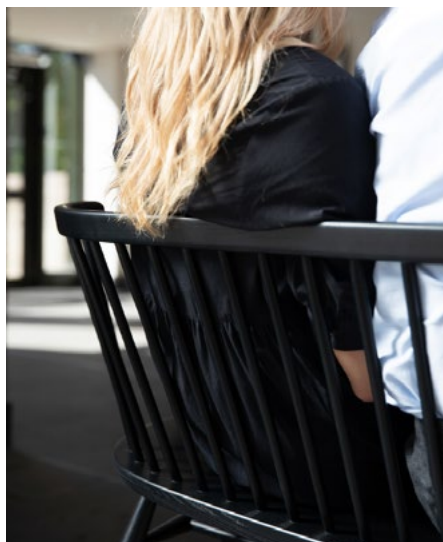
STAFF PICK

We love it so much we dedicated an event to this favourite essential, please see page 113 for more.





Loveseat **By L.Ercolani**



NEST TIP

Pair the bench with a table and mix it with other chairs to create a personal, eclectic look.

1956

Creating an intimate and shared seating experience, the L.Ercolani Loveseat was designed by Ercol founder, Lucian R Ercolani.

Grashoppa Floor Lamp By GUBI

1947

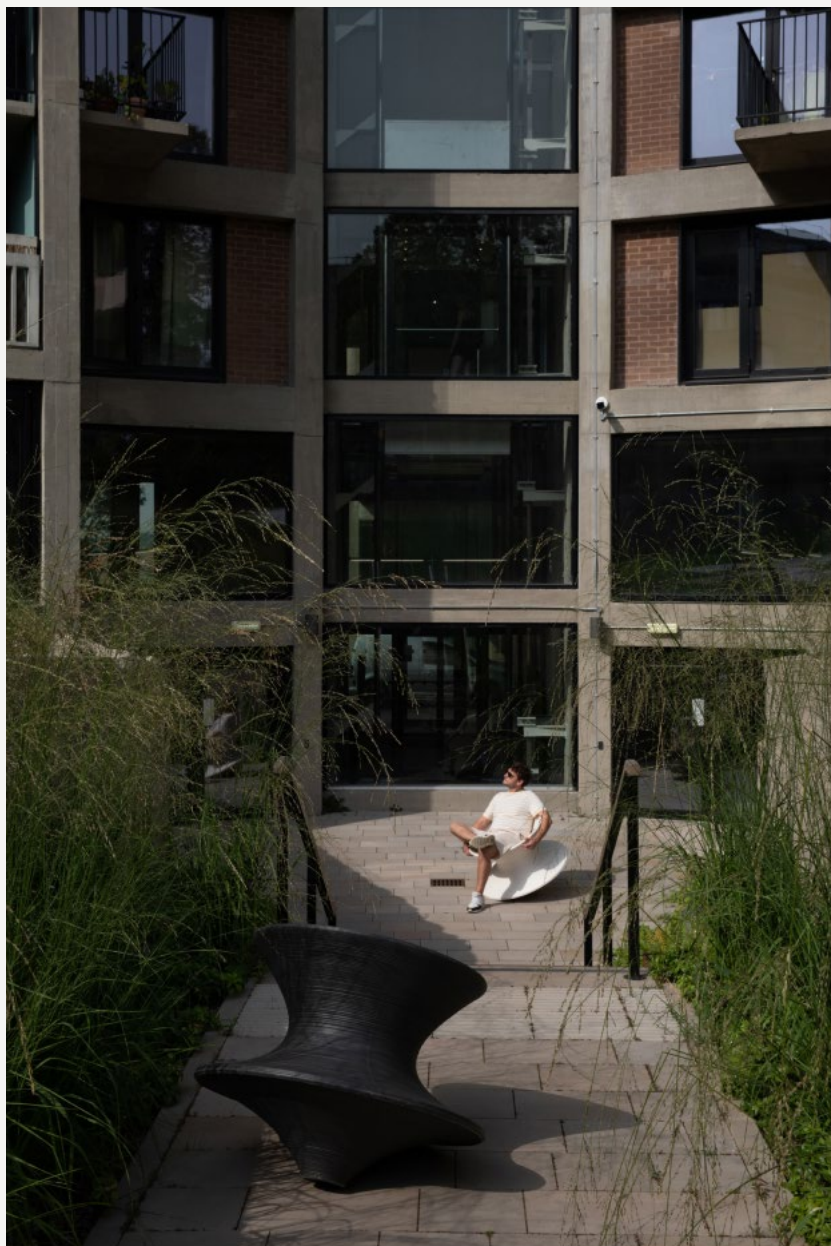
Greta Grossman's iconic GUBI Grashoppa Lamp, a creation by a trailblazing female designer, carries an air of sophistication and functionality in its sleek design.



NEST TIP

Delivers a direct light without glare, perfect as a bedside lamp or over a favourite lounge chair.

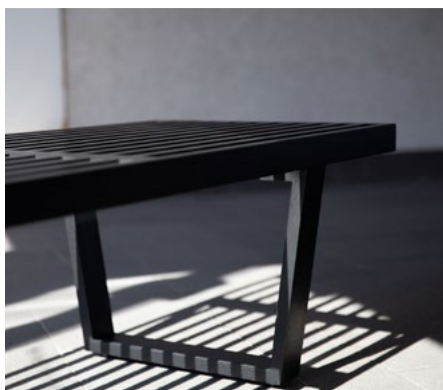
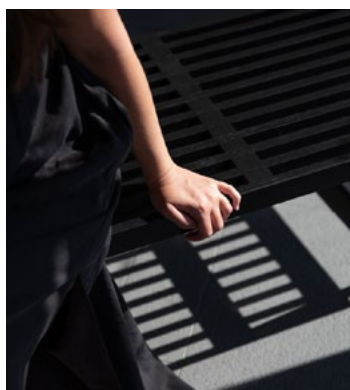




Spun Rotating Chair By Magis

2010

Thomas Heatherwick brings us a startling twist on conventional furniture design with the playful Magis Spun Chair.



Nelson Bench By Vitra

1946

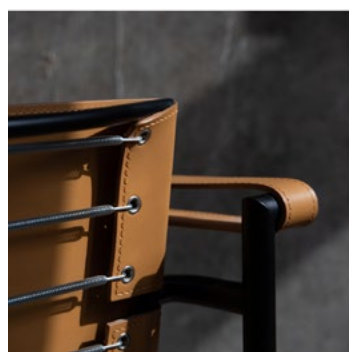
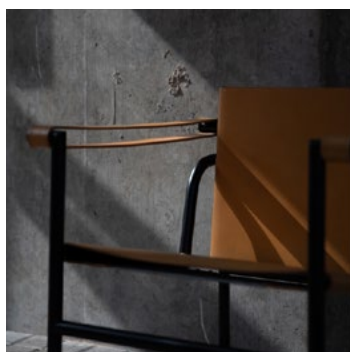
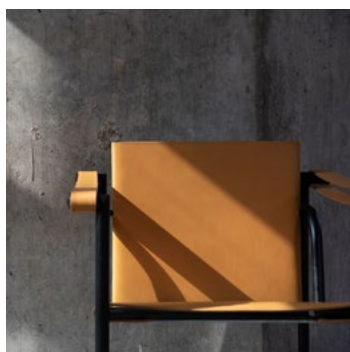
George Nelson's architectural background shines through the Vitra Nelson Bench, with its clean, linear aesthetic. It functions in many ways – hallway or window bench, coffee table and storage unit. Also good for public spaces – we've included them in our new office!

Snoopy Table Lamp By Flos

1967

Inspired by the popular cartoon by Charles Shultz, the Flos Snoopy Table Lamp designed by Achille & Pier Giacomo Castiglioni is an instantly recognisable, iconic piece.





1 Fauteuil Dossier Basculant Armchair By Cassina

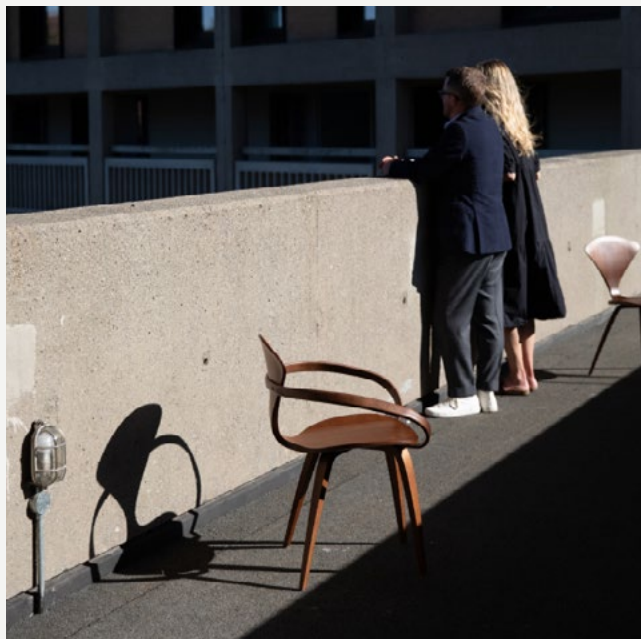
1929

Designed by Le Corbusier, Pierre Jeanneret and Charlotte Perriand the Cassina 1 Fauteuil Dossier Basculant Armchair is engineered to provide perfect support with its dynamic backrest.

Armchair By Cherner

1958

Norman Cherner's plywood armchair, a fixture in design collections worldwide, maintains its allure, crafted meticulously from original drawings and moulds.

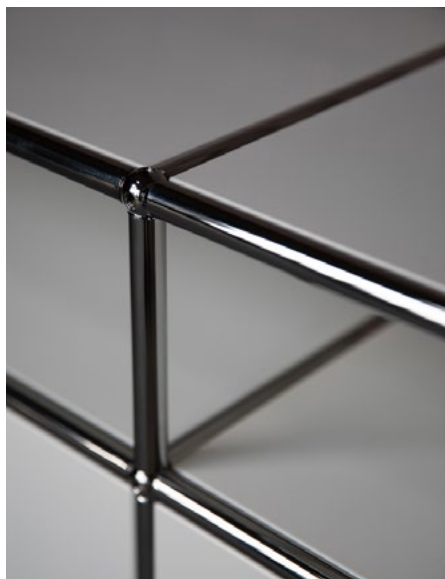




Haller Sideboard By USM

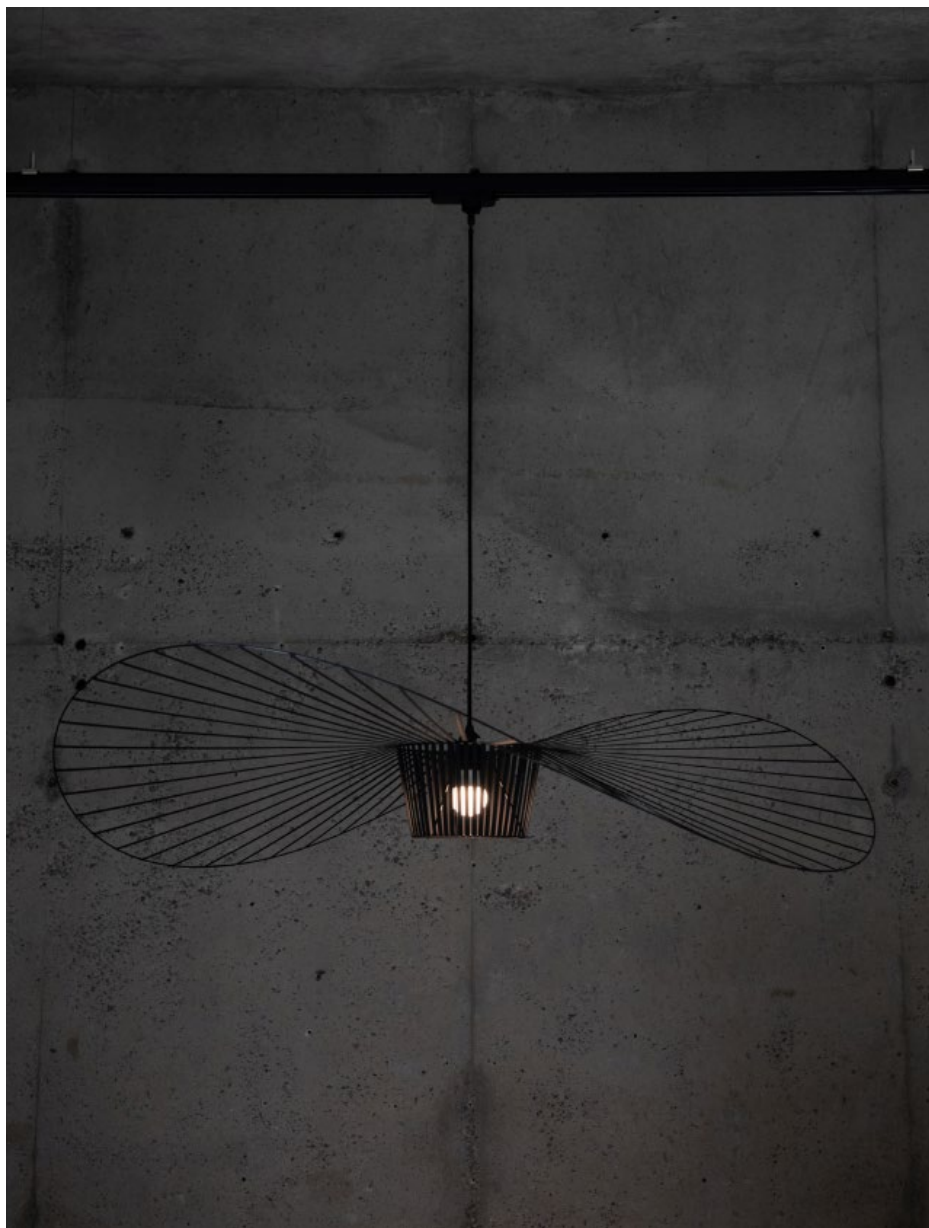
1963

Designed by iconic Swiss architect Fritz Haller, the USM Haller Sideboard C2 embodies adaptability, durability and timeless style. Built to last for generations.



STAFF PICK

We love this piece. It's the perfect addition to a modern home. It can be used for storage or displaying items, and it's a firm favourite among the Nest team.



Vertigo Pendant Light By Petite Friture

2010

Constance Guisset's Petite Friture Vertigo Pendant has become a celebrated contemporary lighting design, weaving a story of elegance and modernity.

60 Stool By Artek

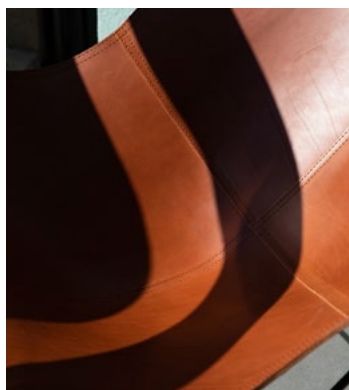
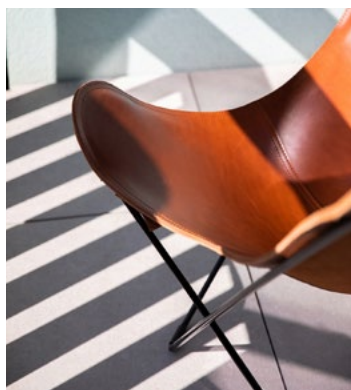
1933

The three-legged Artek Stool 60 is perhaps the prime example of Alvar Aalto's mastery of birch wood – a versatile piece embodying Finnish design finesse, perfect as a stool, table, or display surface.



NEST TIP

This is the perfect starter piece for your space. You can also choose from a variety of colourful seats to add a pop of colour. Discover more about Artek on page 80.



Leather Butterfly Chair By Cuero Design

1938

Cuero Design's re-imagined Leather Butterfly Chair, an iconic masterpiece with a lifetime leather warranty, stands as a testament to 30 years of craft and Swedish design excellence.



PH 5 Pendant Light By Louis Poulsen

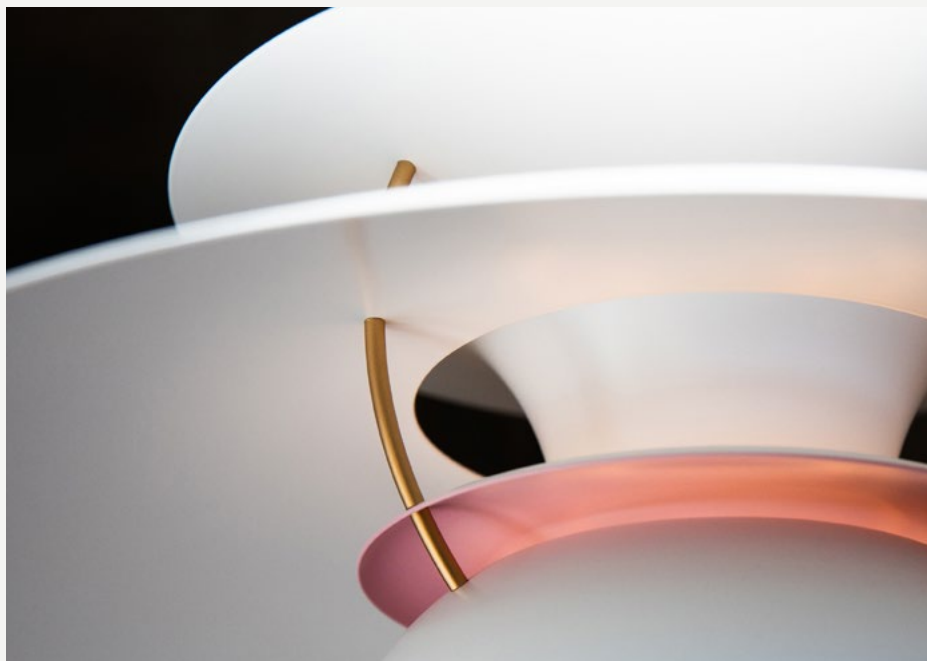
1958

The Louis Poulsen PH 5 Pendant Light, from Poul Henningsen, is defined by its three-shade system and is one of Louis Poulsen's most famous pieces.



NEST SELECT

Welcome this classic into your home. Once you do, you won't look back. Simply, lighting that changes your life.



Mags Modular Sofa By HAY

2007

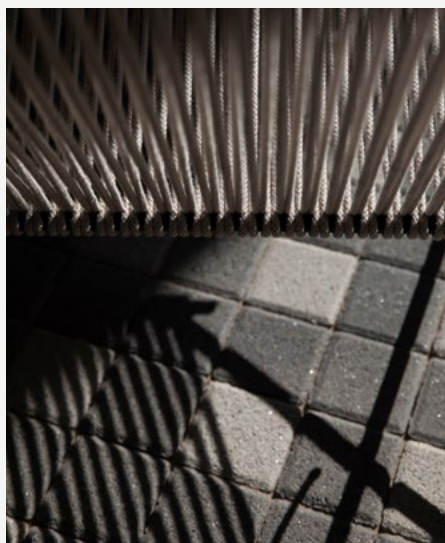
Designed to fit most spaces.
HAY's most versatile sofa has
already become a modern classic
in contemporary furniture.



NEST SELECT

This piece stands out with
its clean and minimal
design. It's upholstered in
Kvadrat Hallingdal fabric,
making it inviting, cozy,
and timeless in style.





PK4 Lounge Chair By Fritz Hansen

1952

Designed by Poul Kjaerholm, the Fritz Hansen PK4 Lounge Chair epitomises Danish minimalist design with its clean lines and understated elegance.



Design icon: House of Finn Juhl Whisky Chair

Delving into their archives, House of Finn Juhl have reintroduced the vibrant Whisky Chair. Designed by the master of Danish design Finn Juhl, the iconic chair is the epitome of luxury.

Designed in 1948 for the Cabinetmakers' Guild Exhibition of the same year, the Whisky Chair was presented as part of Finn Juhl's concept 'The Living Room of an Art Collector'. Described as 'the most original room at the exhibition', Finn Juhl adorned the space with books and paintings to complement his furniture pieces crafted from deep mahogany and maple.

Prior to the 2022 reissue, the Whisky Chair was perhaps better known as the precursor to the hugely popular Chieftain Chair, presented at the same guild exhibition a year later.



Finn Juhl 1912 ~ 1989

One of Denmark's most influential furniture designers, Finn Juhl defied conventions with his unique sculptural approach. Describing himself as a self-taught furniture designer, his lack of concern for critics propelled his bold designs to the forefront of Danish design history.

"Art has always been my main source of inspiration. I am fascinated by shapes which defy gravity and create visual lightness." – Finn Juhl

He is most famous today for his iconic furniture designs including the **Chieftain Armchair** and the **108 Dining Chair** which are now produced by the **House of Finn Juhl**.

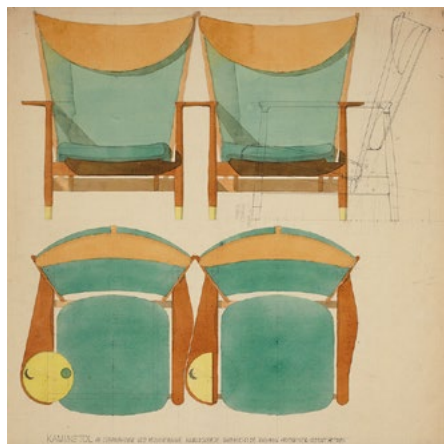
An indulgent armchair

When taking a glimpse at the original 1948 watercolour designs, Finn Juhl's initial concept shows how the chairs fit perfectly together. The distinct curvature of the right armrest slides almost seamlessly alongside the left armrest of a matching chair – allowing two Whisky Chairs to effortlessly merge into one piece.

The design offers a sense of refinement balanced with a deep masculinity in the lines and angles. With its unusual asymmetry, the chair holds a striking figure, with the larger armrest housing a handmade half-moon-shaped brass tray, that those sitting in the chair, can unfold.

The Whisky Chair today

Despite an enthusiastic reception at the exhibition, Finn Juhl did not live to see the Whisky Chair go into production. In 2022 House of Finn Juhl decided it was the right time to bring it back. "We now have more than 50 Finn Juhl designs in the collection, and commercial success is not our main focus when choosing to relaunch one of his iconic pieces. Instead, it is our passion to go to the greatest of lengths to recreate the comfort, details, and sensuousness of Finn Juhl's designs." Hans Henrik Sørensen, founder and co-owner of House of Finn Juhl.



Discover the Whisky Chair and full range of House of Finn Juhl designs at nest.co.uk/house-of-finn-juhl ➔

”

'The one on the right, which is the widest, has a built-in circular brass tray which can serve as an ashtray as well as providing a place to put one's whisky glass!'

”

Cabinetmakers' Guild Exhibition visitor remarking on the chair's asymmetrical armrests.



Affinity through design

A woman with short grey hair, wearing a blue denim shirt and dark trousers, is sitting on a wide wooden windowsill. She is holding an open book and looking down at it. The windowsill is cluttered with several potted plants of different sizes and styles. To her right, a red wooden chair with a light-colored seat is partially visible. In the background, a large window looks out onto a lush green mountain landscape with a small town visible in the distance. The interior has a modern, minimalist feel with light-colored walls and a concrete floor.

Design can greatly influence our emotions, behaviours and overall well-being. When done well, it can enhance our connection to the world around us and foster a sense of belonging, purpose and meaning.



Vitra Standard Chair — one of Prouve's most memorable designs, the iconic chair is a striking talking point.

Whether formal or casual, gathering around a table can bring people closer together. A place that encourages face-to-face interaction and a sense of community, the dining table is often a focal point for social gatherings.

&Tradition SK5 In Between Dining Table – Designed to partner with the In Between Chair, the legs echo the same angle as the front legs of the chair.

Table Talk

Choosing the right table to suit your home is crucial in creating an environment that offers comfort and reflects your personal style. The design can set the tone for the entire gathering and needs to be the right size for your space, whether you opt for a table that can be extended out to accommodate more guests or a smaller round or square table that can be tucked away when not in use. The right table can transform a space, align with your aesthetic and bring people closer together.



Shop our full collection of Dining Tables at nest.co.uk/dining-tables ↗



Emily Barnes makes the most of a small space with the **HAY Palissade Outdoor Cafe Set**, creating a moment to connect.



Artek
83 Aalvo Dining Table



Carl Hansen & Son
AH902 Outdoor Square Table



ferm LIVING
Bevel Extendable Table



HAY
Palissade Outdoor Dining Table



&Tradition
SK4 In Between Dining Table



Mater
Ocean Outdoor Table - Large

Keep the party going...
Transform your gatherings with
versatile designs that elevate
your evenings and encourage
easy conversation and laughter.



1. &Tradition SC53 Como
Portable Table Lamp

2. &Tradition Alima Trolley

3. &Tradition SC79 Collect
Wine Glass



Our tips to creating spaces meant for gathering

Create an ambience with the soft glow of portable lamps that invites your guests to linger long into the night.

Make room to entertain, consider taking the fun outside with an outdoor bar area.

Versatile pieces can be moved to provide more surface area and space for gathering.



4



4. USM Haller Serving Trolley

5. Vitra Panton Chair


6. The Muse Portable Table Lamp –
Tala x Farrow & Ball

7. HAY Tint Wine Glass – Set of 2

All available in a range of colours and sizes to suit your style.



7



By thoughtfully incorporating design elements that embrace the environment around us, we can create outdoor havens that invite us to unwind, rejuvenate, and reconnect with nature.

HAY Palissade Lounge Chair –
Showcased here in Lucy Taylor's silver award-winning Traditional Townhouse Garden, the chairs provide a seamless connection between comfort and the surrounding natural environment.

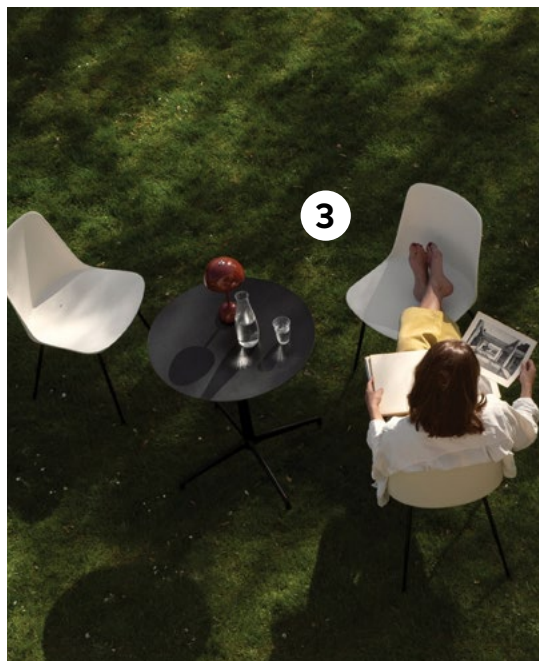


Our tips to relaxing design outdoors.

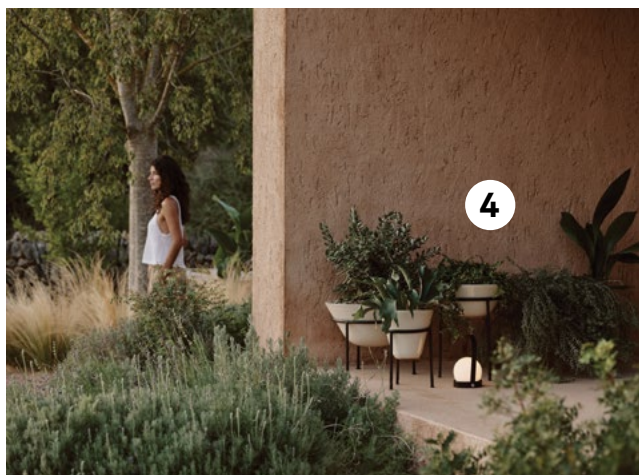
Bring the inside out, seamlessly blend nature with design by bringing planters and accessories outside for the day.

Relaxed seating areas will make your outdoor space feel like an extension of your home.

Consider your space and use plants or screens to create a sense of seclusion or privacy.



1. Audo Copenhagen Hydrous Watering Can
2. Audo Copenhagen Pallares Plant Tools – Set of 3
3. &Tradition HW70 Rely Outdoor Dining Chair
4. Audo Copenhagen Daiza Planter
5. Louis Poulsen Panthella 250 Portable Table Lamp





A central element in design, lounge chairs and sofas not only provide a cosy retreat for individuals but also serve as an inviting spot for shared moments with friends and loved ones.

Muuto Connect Soft Modular Sofa -

A beautifully realised seating solution, the Connect is well suited for the modern home yet carries a timeless, Scandinavian aesthetic.

Sink into their embrace

With their distinctive designs and ergonomic features, our selection of sofas and lounge chairs encourage relaxation with plush cushions and contoured forms. These pieces vary widely, offering a plethora of styles, materials, and finishes to suit diverse preferences and design sensibilities. Serving as beacons of relaxation, these versatile pieces beckon us to sink into their embrace and immerse ourselves in moments of tranquillity and togetherness.



Shop our full collection of Sofas at
nest.co.uk/sofas-lounge-chairs ↗



Discover the iconic form of the **Fritz Hansen Egg Chair** with a spectacular leather anniversary edition.



Muuto
Wrap Lounge Chair



GUBI
Pacha Outdoor Two Seater
Sofa



Cuero Design
Leather Butterfly Chair
Lounge Set



Normann Copenhagen
Rope Corner Sofa



Moooi
Knitty Lounge Chair



&Tradition
AV22 Inland Two Seater
Sofa – Leather

In today's fast-paced world, joyful design recognises the inherent human need for joy and seeks to reintroduce it into our lives. It has the potential to bring people together, transcending cultural and linguistic barriers.



Vitra Heart Cone Chair – Like many of Verner Panton's designs, the Heart Cone Chair reflects his playful and vibrant energy while challenging the conventions of traditional furniture design.



Our tips to incorporating joyful design

Engage the senses, consider incorporating tactile materials that evoke positive emotions.

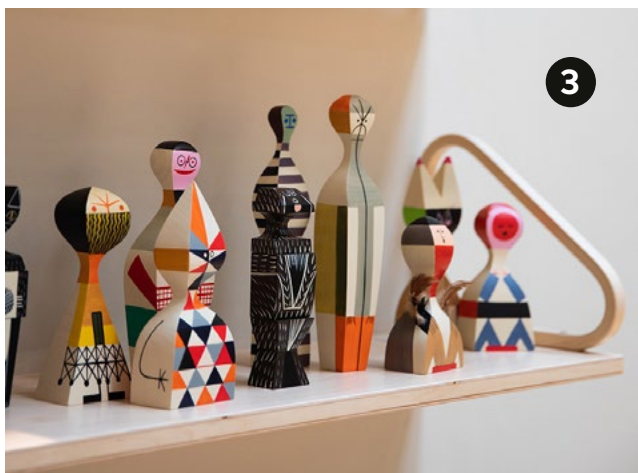
Encourage interaction with pieces that invite engagement and participation.

Incorporate storytelling and create a narrative to captivate guests.



1. Normann Copenhagen Bit Stool
2. HAY Play – Chess Set
3. Vitra Wooden Dolls
4. Magis Puppy Chair

All available in a range of colours and sizes to suit your style.



Whether hosting a seasonal get-together or just a special night with friends and family, mastering the perfect table setting can transform your dining events and help build connections.



Set the tone of your gathering with carefully selected layers, dinnerware and centrepieces. Create a simple tablescape with more paired-back designs, or take a more eclectic approach with a mix of forms and colours. Texturised pieces like the **ferm LIVING Fountain Centrepiece** provide a beautiful aesthetic with a unique tactile experience.





The art of Ikebana

Often translated as 'Japanese floral art', Ikebana is the act of giving life to flowers, allowing them to reveal their innate beauty and spirit. A wonderful way to celebrate nature's beauty, we explore the centuries-old art of ikebana.

”

The tallest placement (shin) represents the sky or heaven. The second placement, which is shorter and closer to the ground (soe) represents mankind. And then the third placement, which is placed at the bottom (tome) represents the earth.

”

Bloom Sheffield florist, Erin



The origins of ikebana dates to the 7th century in Japan when monks would collect flowers from the garden and offer them to Buddha. Hundreds of years later, ikebana was eventually formalised by emperors and aristocrats. Today, there are numerous schools of ikebana, all with varying customs, with the practice often being passed down through same family, generation to generation.

The Fritz Hansen Ikebana collection

True to the spirit of ikebana, the Fritz Hansen Ikebana vases have been designed to honour every stem placed within them, from head to crown. Whilst traditional ikebana involves using a spiky device called a kenzan to hold flowers – the Ikebana vase makes use of a punched metal frame to achieve the same result. This frame features holes of varying sizes, allowing you to creatively place individual stems to create your own floral masterpiece.



Read the full article at
nest.co.uk/the-art-of-ikebana ↗



For the kids

Providing playful design

**Help create your little one's haven
at home with our collection of
modern children's designs.**

From smart storage ideas to fun and joyful
accessories, you can create a space that is a true
reflection of your child's growing personalities.

To find out more — read our kid's room checklist at
nest.co.uk/the-kids-room-checklist ↗

Playful icons - With a colourful aesthetic and unique form the **Eames Hang it All from Vitra** is a firm favourite for children's spaces, while offering the perfect introduction to the design world.



Tap into your inner child and provide a space to accommodate rest, relaxation, play and imagination while making the room a story of who they are.

Create the space

Whether creating a comfy little reading nook, a workspace for learning, or a corner for play, creating different spaces for different activities encourages harmony in your child's space.

Prioritise personality

Look at the world through their eyes and decorate the room with them in mind, whether through colour, accessories or statement pieces. Considering their thoughts and feelings helps to provide a space where a child feels comfortable, safe and happy.



Shop our full collection of kids designs at nest.co.uk/kids ↗



Real homes

The endearing **Vitra Eames**

Elephant is an ideal companion for playtime activities in Toki's home.

@toki_loves



Nurture a space that encourages creativity.

The timeless design of the **ferm LIVING Little Architect** collection opens up a world of imaginative play, offering your miniature geniuses a place to shape and form ideas, host dinner parties and create.



NEST LOVES

The **USM Haller Storage Box M53** provides a playful place to store accessories or toys and can be used in more than just a bedroom.

Top Picks for Kids



Fritz Hansen
Ant Children's Chair



ferm LIVING
Bird Lamp



USM
Haller Storage Box M53



Muuto
The Dots Coat Hooks



ferm LIVING
The Park Textile Pendant Light



Carl Hansen & Son
CH411 Peter's Table



ferm LIVING
Sun Tufted Rug



HAY
Rey Low Stool



Our top tips

Invest in functionality

Providing a space with staple pieces and steadfast functionality accommodates any potential desire for changes as they grow without needing to redecorate the entire room. Built-to-last pieces can even be given a second life with a younger sibling, family member or friend.

Utilise considered lighting

Encourage how your child can use the space through lighting. For example, introduce lamps with concentrated brightness in work or play areas to inspire imagination and focus.

Provide storage

With a multifunctional space like a child's room, having a space to store away all their toys and knick-knacks brings in the balance needed to accommodate all activities. Playful boxes, bags and baskets bring personality into the room while making the storage solutions easy for little ones to interact with and identify.



Find you style

Connecting through colour

**Colour is a powerful tool for
connecting people and spaces.
Colour can prompt conversation,
influence your mood and affect
your environment.**

From bold statement pieces to subtle
accents, explore our curated selection of
colourful designs and discover the perfect
way to connect through colour.

Your canvas for colourful living
Montana Kevi 2060 Dining Chair
– With an incredible understanding
of colour, Montana's carefully
curated palette looks to influence
and inspire interiors.

A colour for every purpose, discover
the full selection of Montana
designs at nest.co.uk/Montana ↗



Colour is not just a visual expression
but a reflection of our experiences.
The impact of colour on our lives
is undeniable, wielding the power
to create connections between
ourselves and the spaces we inhabit.



NEST LOVES
HAY Quilton Two Seater Sofa
and HAY Colour Cabinet.

Danish brand **HAY** are known for their exuberant approach to colour, choosing to pre-empt trends with daring selections. Standing apart from the neutral tones of Scandinavian design, HAY demonstrates a cohesive and colourful library.



Modular Marvels

Swiss storage heroes USM and their versatile and playful outlook has quickly become an interior style staple.





NEST LOVES

Defined by its modular ball-and-tube frame, the Haller collection is a symbol of adaptability and durability. The Haller Sideboard C2 can be used as a striking stand-alone piece or creatively built upon to fabricate a bespoke system.

Available in a wide selection of complementary colours:



Shop our full collection of USM
at nest.co.uk/USM ➔



Real homes

"Having two separate tables let's me play around with the config and even move them around the house as needed (I'm always moving stuff). It also let me play around with two different colours."
@hryspn



USM

Haller Mobile Pedestal M26



USM

Haller Media Unit O2



USM

Haller Media Unit O1



USM

Haller Sideboard M64



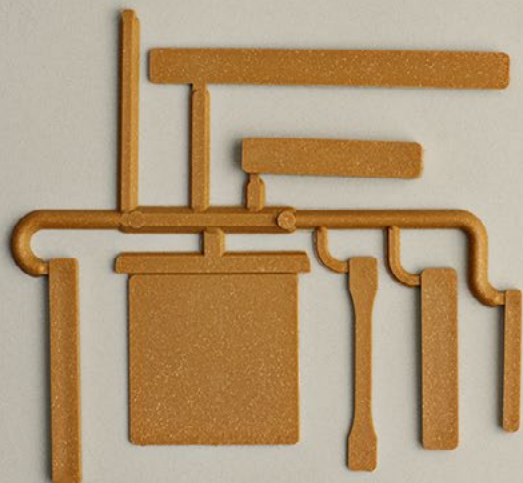
USM

Haller Home Office
Desk B21



USM

Haller World of Plants
Sideboard M56





The Muuto perspective: Colour

Talking colour with Silke Foged

Within the design world, if there's one brand which knows about colour, it's Muuto.

We caught up with Muuto's Design Manager, Silke Foged, to see if she could share her expertise.

How can colour impact the ways which we experience our surroundings?

"In our everyday life we see colours and we remember — things, feelings, moods. I believe that colours can have a huge impact on how we feel, whether it is a sense of calm, energy, or joy. This goes for colours that are more subtle too, not only the bold or loud."

From bright to dark, vibrant to subtle – where should you begin when choosing colours for your interiors?

"I think the best way to start is to refrain from choosing a very specific direction, dark home, colourful home, etc. My recommendation would be to instead fall in love with an object, and to go with one of the beautiful, more interesting colours it comes in. Move it around and play with it in your home. By getting to know it, you start seeing what a great colour combination might look like. Then you can allow yourself to be more playful, adding more and more pieces."

Are there any rules that should be followed when mixing and matching colours in a space?

"Generally, I think you should create your own rules. It is your home, and you should feel at home in it. One good piece of advice is that colours can only shine if you give them room to do so. This can manifest itself in a space in the form of a great colour combination, or by keeping subtler tones on some surfaces or products in order for others to pop."

Are there any colour combinations you think work particularly well?

"There are a lot of combinations I find beautiful. In general, I like when you combine bolder colours with more subtle colours or vice versa, letting each one of them have some space to truly shine. If you want to combine lots of colours you shouldn't use them in their purest form, but rather break them slightly in order for them to be able to work together, to converse."

Read the full interview ↗



Coloro + WGSN

As leading authorities in the world of colour and trend forecasting, WGSN and Coloro recently identified a selection of colours predicted to impact the world of design in 2025.



Sunset Coral Coloro 009-58-31

Red can evoke strong emotions. Sunset Coral is distinguished by its energetic tone that appeals to the pursuit of joy. Whether as a bold accent or primary hue, it heightens senses and elicits a strong response.



Ray Flower Coloro 037-82-32

Ray Flower, a radiant yellow, embodies warmth and hope, inspired by Jess Redgrave's ClimaFibre project using sunflowers for materials. Symbolising sustainability, it resonates with nature's harmony, ideal for interior spaces.

Nest colour edits



Established & Sons
Filigrana Pendant Light
-S5 Globe



Vitra
LSR Eames Plastic
Lounge Chair



&Tradition
VP8 Flowerpot Wall Lamp



Carl Hansen & Son
CH24 Wishbone Chair Soft
- Ilse Crawford Edition



USM
Haller Sideboard E2



Warm Nordic
Cone Pendant Light



House of Finn Juhl
Pelican Lounge Chair
with Buttons



FLOS
Bellhop Table Lamp

Nest colour edits



FLOS
Tab Table Lamp



HAY
Arcs Trolley – Low



HAY
Weekday Bench



nanimarquina
Tres Rug



Moooi
NomNom Pendant Light



Cassina
559 Sengu Dining Table
Oval



&Tradition
JA3 Tung Side Table



HAY
Dot Cushion XL – Mini Dot



Future Dusk
Coloro 129-35-18

Future Dusk, a captivating blend between blue and purple, evokes mystery and escapism, reflecting society's intrigue with AI, the metaverse, and space exploration. Its deep, celestial tone conjures imagery of starlit skies, fostering contemplation and suiting spaces amidst transformation.

As designers embrace darker, moodier palettes, Future Dusk, offers a unique depth as an alternative to classic dark blues. Its versatility as a bold statement and a nuanced neutral make it an ideal choice for interiors seeking a captivating edge.



Aquatic Awe
Coloro 086-70-25

Aquatic Awe, a transformative turquoise, revels in nature's wonders while echoing evolving wellness trends in interiors. Balancing natural serenity and digital innovation, it elicits ideas of tranquil oceans, perfect for spaces embracing nature-inspired yet tech-forward design. This palette sparks wonder, uniting the organic and digital realms and encouraging holistic, forward-thinking interiors.

Materials

With great attention to detail, designers consider how they can use materials and creative methods to tell their stories, selecting materials that look beautiful and withstand the test of time, providing delight to individuals who interact with it.

Highly sculptural pieces like the **101 Copenhagen Brustus Lounge Chair** demonstrate the effectiveness of choosing the right material and how it can characterise the design.



Our top 10 Marble

A natural stone admired for centuries, the quality and characteristics of marble vary depending on its source and processing.



NEST LOVES

The striking arrangements of the
Audo Copenhagen Plinth Collection.

Best of the rest



&Tradition

Lato Side Table



Ferm Living

PK61 Coffee Table – Marble



Knoll Studio

Saarinen Tulip Dining Table
– 120cm Diameter – Marble



GUBI

Gravity Table Lamp –
Marble



Lee Broom

Marble Tube Pendant Light



New Works

Atlas Coffee Table



Tom Dixon

Stone LED Wall Light



Audo Copenhagen

JWDA Marble Table Lamp



e15

CT09 Enoki Side Table with
Marble Top



Read all about marble at nest.co.uk/we-talk-marble ↗

**For help and advice on finding the perfect marble addition
for your home, please email info@nest.co.uk,
call +44 (0)114 243 3000 or get in touch on Live Chat.**



In production: Audo Copenhagen Plinth

In a quest to reimagine the conventional plinth, Danish design studio Norm Architects debuted a series of marble podiums designed to transcend boundaries and adapt seamlessly to diverse settings.

”

The dashes of colour you see are called veins and they are most often made of silt, sand, clay, iron oxides or chert grains found within the original stone. While they may be called impurities ... it is these splashes of colour and texture that make marble so special.

”

Audo Copenhagen

The Plinth collection simultaneously stands as a modern work of art and as a functional piece of furniture. Clean, geometric contours effortlessly showcase the mesmerising patterns inherent in marble, ensuring each piece is completely unique.

With meticulous precision, each carefully selected piece of marble is assembled by hand to ensure that the sides line up impeccably. Embraced through history, marble, synonymous with elegance and refinement, assumes a new role in the Plinth – a podium to exhibit other objects while offering itself as a sculptural masterpiece.

Handpicked from diverse corners of the globe, the marble variants – Nero Marquina from northern Spain, Carrara and Calacatta Viola from Italy, and Grey Kendzo from Iran - share a low refraction index, allowing light to penetrate their surfaces, breathing life into the Plinth. Audo's commitment to simplicity and uncompromising quality control empowers the marble to narrate its story unhindered.

Discover the full Plinth collection from Audo Copenhagen at nest.co.uk/plinth ↗



Inside your homes: Zlatko Nikoloski

We visited Zlatko Nikoloski for a tour of his east London apartment. Full of light and with incredible views across the city we were immediately captivated by the stunning design of his home.

A light and airy space, Zlatko's home required lighting that complemented the space and offered an ambient glow for the evening. **Nemo Lighting In The Wind Horizontal Pendant Light** by Arihiro Miyake.







Zlatko Nikoloski worked with Sales Manager Ashlee and our interior advice service to help with choosing the perfect pieces for his new home. Boasting a selection of timeless Scandinavian designs, we were excited to see how the space turned out.

What were your initial style intentions when curating your home?

"I have always been attracted to the principles of minimalism and the simple lines and functionality of the Bauhaus movement. I am particularly fond of open and spacious living areas, with plenty of light reflecting throughout the day."

"The process of home curating was heavily influenced by the two styles mentioned above, along with the attractive simplicity associated with Scandinavian design. I'm drawn to spaces that rely on light and select materials that completely avoid a sense of clutter."



**Do you notice commonalities in the types of design you appreciate?
What qualities do you look for?**

"Simplicity and functionality are often the characteristics I look for and am most drawn to when considering design. I think these two principles are embodied in modern minimalism and Scandinavian design. I also like design that features light and natural materials, like wood. With wooden materials being so heavily present in contemporary Scandinavian design, the aesthetic is something I look to integrate into my space."

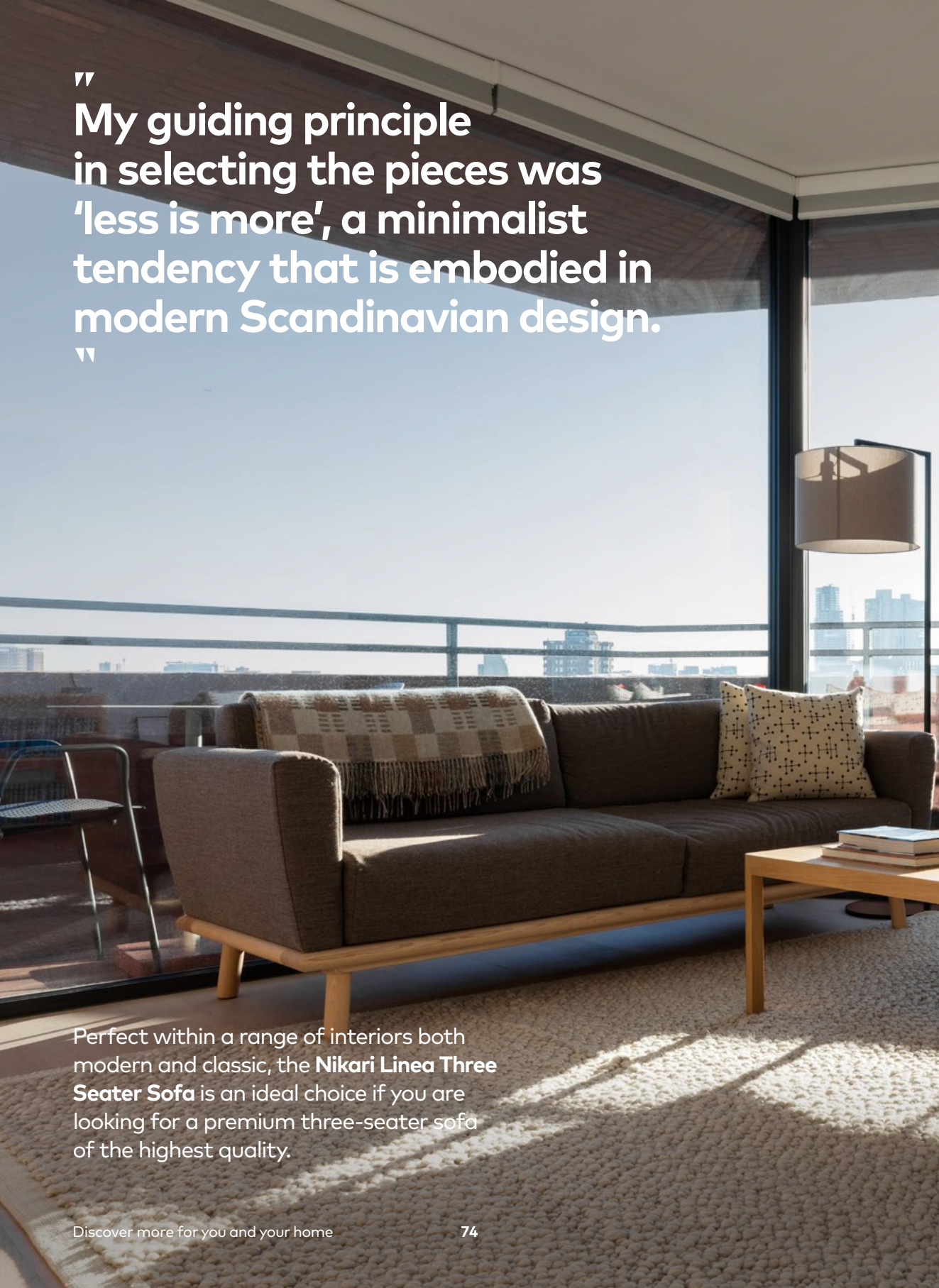


SHOP THE LOOK

Designs were chosen carefully, looking to integrate pieces with natural materials and simplicity of form making the **Carl Hansen & Son CH24 Wishbone Chair**, by **Hans J. Wegner**, a favourite choice.



“
My guiding principle
in selecting the pieces was
‘less is more’, a minimalist
tendency that is embodied in
modern Scandinavian design.
”



Perfect within a range of interiors both modern and classic, the **Nikari Linea Three Seater Sofa** is an ideal choice if you are looking for a premium three-seater sofa of the highest quality.





SHOP THE LOOK

A 50s design classic, the **Warm Nordic Dwell Lounge Chair** is beautiful from every angle, and a timeless design that can effortlessly integrate into the modern home.



”

Ashlee's help during the process was invaluable. While I had already selected a few crucial pieces of furniture, I was undecided about some others, needing her expertise in helping me choose designs that would enhance the rest of my selections.

”



NEST LOVES

Boasting a simplistic geometric aesthetic the **Zeitraum Read Neon Floor Lamp** is ideally utilised in a living room as a reading lamp beside an armchair.



PERFECT PARTNERS

Zeitraum Waiter & Waitress Occasional Tables combined with **Zeitraum Neat Noon Table Lamps** create a simple yet functional addition to a living space.

When it comes to the designs you have selected – how were they chosen? And how did our advice help during this process?

"While some of my choices were instant must-haves for myself, they are also paired with pieces that I considered carefully over time. With such a love for minimalist style and light, wooden furniture, I was thinking along these lines when selecting the furniture pieces for the flat. The Simple Hi bed by Zeitraum is an excellent example of something that caught my eye when deciding on the crucial furniture for the bedroom. The same goes for the Carl Hansen & Son dining table and chairs. A selection of Danish design classics, the CH24 Wishbone Chairs and CH327 Dining Table epitomise simplicity and functionality."

"Nest's help during the process was invaluable. While I had already selected a few crucial pieces of furniture, I was undecided about some others, needing her expertise in helping me choose designs that would enhance the rest of my selections."

Discover more about both Zlatko's love for minimal design and his personal shopping experience in our online Journal. ↗

With thanks to Zlatko Nikoloski
Interior advice: Ashlee Pendleton
Photographer: Max Hawley

Brands making moves

Finnish brand Artek have upheld their standards for over 85 years.



NEST LOVES

The highly sculptural **Artek Domus Lounge Chair** from legendary Finnish designer **Ilmari Tapiovaara**.

Embedded in the legacy of Aalvo Aalto, Artek embraces a philosophy rooted in the user's experience. Their furniture is crafted for effortless maintenance, repair and re-purposing – a testament to their commitment to longevity and adaptability.

Artek's steadfast dedication to ethical manufacturing and premium quality is evident in their emphasis on regional sourcing and safety standards. Each supplier is meticulously selected for expertise and certifications, while their strategic logistic partnerships further minimise their carbon footprint, reflecting a holistic sustainability commitment.



Discover the full collection from Artek at nest.co.uk/artek ↗



Award winning

Artek's most renowned design, the Stool 60, received the first-ever German Sustainability Award (GSA) for Design.

Based on the UN Agenda 2010, for sustainable design, the GSA encourages responsible design and found the stool's long life expectancy and manufacturing process to be a commendable ecological choice for consumers.



Artek
60 Stool



Artek
900 Tea Trolley



Artek
83 Aalto Dining Table



Artek
Domus Chair

Pillars of sustainability



Defining sustainability isn't an easy task. No matter how sensitive your material choice is, how eco-friendly your production methods are or how recyclable your products are – if products are being created with fashion in mind, not designed to be a long-term investment – you can't call them sustainable.

At Nest, we only choose designs that we believe have longevity, so you know when you buy from us, your designs should last a lifetime.

To help you begin the journey towards sustainable design, we've created a checklist of points that contribute towards a product or companies' sustainability.

We can't possibly list every green option, but we can give you an idea of the basic things to look out for. From responsible production processes to environmentally friendly material choice, we put the spotlight on how to choose inherently sustainable designs.

Are you aware of your furniture footprint?

The three pillars of sustainability with points to look out for:

Economic

- Origin of resources
- Ecological economic structures
- Ability for repair
- Timeless design

Ecological

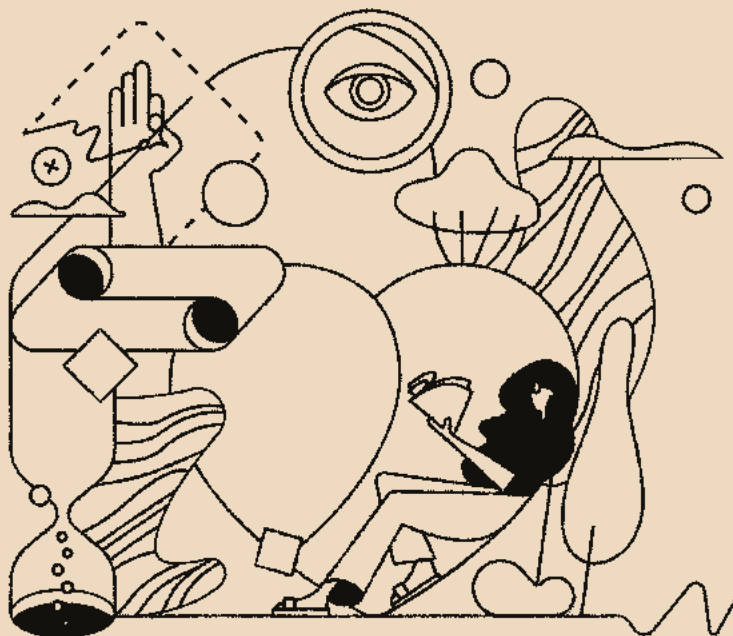
- Longevity
- Waste avoiding design
- Low pollution design
- Disposal friendly design

Social

- Fair work environments
- Respect for equality
- Comprehensive transparency

For more information on the sustainability of our products, you can contact our dedicated product specialists, who would be happy to talk you through the information.

Simply call
+44 (0)114 243 3000
or email info@nest.co.uk



TLC Cheongdam Medical Centre

Redefining wellness through design, our contracts team worked with international client OPlan Design, to style and curate the soothing and welcoming TLC Cheongdam Medical Office.

nest.
CONTRACTS

We're here to help you find your own style!

The paediatric area delights with its playful design elements, integrating vibrant hues and tactile textures. A centerpiece is the **HAY Pinocchio Rug**, a riot of colours underfoot, complementing the whimsical **&Tradition LC3 Margas Two Seater Sofas**.



Located in the heart of Cheongdam-dong, Seoul, TLC Cheongdam Medical Centre shuns the traditional aesthetic of medical spaces in collaboration with OPlan Design, a premier interior design agency in South Korea and Nest Contracts. The result? A modern facility that marries functionality with an inviting ambiance.

Stepping inside, visitors are immediately struck by the homely atmosphere – an intentional design choice fostering relaxation and tranquillity. A departure from the sterile, clinical environments typically associated with medical facilities, here, the space exudes warmth, reminiscent of a welcoming home.

Luxurious lounge chairs, such as the iconic **Little Petra** from **&Tradition**, beckon visitors to take a seat amidst generous plant arrangements that infuse the atmosphere with vibrant greenery.







The **Form & Refine**
Shoemaker Bar Stools
introduce natural materials
to the waiting area, bringing
warmth while harmonising
with the countertop's tranquil
palette of pale blue and
green tiles, orchestrating
a visual symphony that
soothes and captivates.

The medical office seamlessly blurs the lines between a professional workspace and a comforting study. The gentle, soothing glow emitted by the **Louis Poulsen PH 3½-2½ Glass Table Lamp** imparts a reassuring aura that nurtures a sense of privacy.





With the help of Nest Contracts, TLC Cheongdam Medical Centre stands as a testament to the transformative power of design within healthcare settings, embracing a holistic approach where aesthetics elevate the wellness experience for all who step through its doors.

Discover more about our Nest Contracts services and explore some of our favourite projects. ↗

With thanks to OPlan Design
Photographer: Mineun Kim

nest.
CONTRACTS

Give the gift of great design



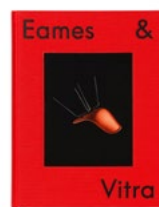
Unforgettable gifts that stand the test of time, our collection of unique designs are sure to be treasured for years to come.



New Works
Kizu Portable Table Lamp



Audo Copenhagen
Olfacte Scented Candle
– Wet Ink



Vitra
Eames & Vitra Book



ferm LIVING
Figure Cushion



&Tradition
JH39 Momento
Candleholder



HAY
Jessica Hans Shadow Vase

Each with a surprising story, our iconic gift selection makes the perfect choice for the person that has everything. Why not treat your loved ones to something special?



Browse gifts by category
online at [nest.co.uk/gifts](https://www.nest.co.uk/gifts) ↗



20 YEARS YOUNG

2003

Nest emerged from modest origins, beginning in a cosy showroom on Ecclesall Road in Sheffield. Originally known as Living Rooms, this was the birthplace of the nest.co.uk platform, where our design journey began.

2009

As pioneers in eCommerce, we swiftly outgrew our snug showroom, expanding into a dynamic new space on the city's outskirts, excited for what lay ahead for us in the design world.

2012

We launched our inaugural brochure - a curated collection of interior advice and ideas. This edition heralded the start of our love story with Park Hill, staging the photography in the apartments and shared spaces.

2013

Driven by the growing interest in design across UK homes, we expanded our space, relocating our warehouse and logistics teams near Kelham Island. Simultaneously, we partnered with Kiwi & Pom to transform our showroom into a stunning reflection of our design vision.



2015

Building on our reputation, we stepped into the spotlight as headline sponsors at Design Junction during the London Design Festival. Teaming up with 2LG Studio, we curated an enchanting pop-up shop space that captured imaginations and brought products within the reach of customers.

2017

We teamed up with Manchester's Oi Polloi for a unique collaboration with Nest, blending Northern talent to highlight the intersection of fashion and design – an ode to everyday design.

2019

A pivotal year of refreshing and exciting collaborations. Yorkshire Sculpture Park sought our expertise to furnish their award-winning restaurant, The Weston. Collaborating with My Father's Heart, bespoke kitchen artisans, we co-hosted an in-showroom exhibition featuring our timeless classic designs.

2021

The unveiling of Nest Contracts marked another significant milestone – a dedicated space catering to the specialist needs of our trade partners, offering our knowledge and expertise.

2023

In a much-awaited celebration of our 20th year, we unveiled our crowning achievement – the Park Hill showroom. Simultaneously, our new warehouse and bespoke head office build met completion, and our team moved into our new, fit-for-purpose home.

At every exciting step, our commitment to Sheffield and our passion for bringing functional design to you remains.

Here's to another 20 years!

“
The showroom design strikes a balance between Park Hill’s modernist architecture and the natural world, creating an interesting blend of organic and industrial elements.
”





Nest at Park Hill

Visit our new showroom

**Located at Park Hill in Sheffield,
the Nest showroom is your design
destination in the North.**

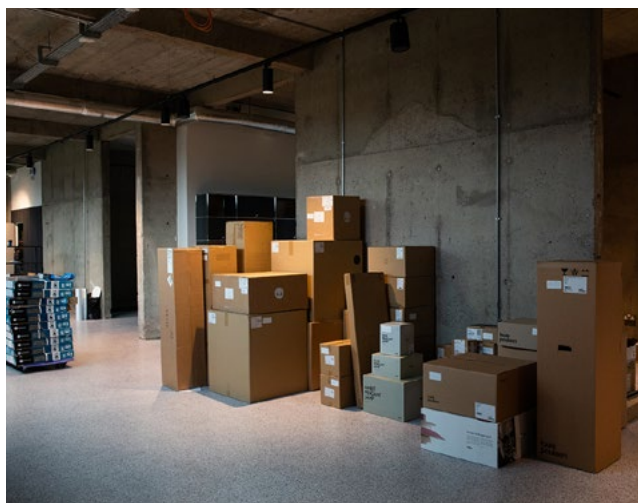
Christian Hawley acquired the space in 2021 with a clear vision in mind. After many years of admiring the iconic building, producing photo-shoots against the backdrop and working alongside Urban Splash on previous projects it was a natural next step for Nest.

To find out more —
read The Renovation of Nest's Park Hill
Showroom at **[nest.co.uk/the-renovation-
of-nests-park-hill-showroom](https://nest.co.uk/the-renovation-of-nests-park-hill-showroom)** ↗



"It was very important to us that we make the most of the original space and features and complement it with the design of the interior, so we have invested a lot of time into getting everything just right. A considered approach that works in harmony with the existing architecture was something we felt passionate to achieve."

Christian Hawley,
CEO and Founder



“
The transformation of this space
into Nest’s awe-inspiring new
showroom is a testament to
the team’s creativity, respect
for heritage, and the seamless
blend of modern aesthetics with
brutalist architecture.
”





For us at Nest, the working showroom at Park Hill is more than just a show space; it is an enduring symbol of the fusion of history and innovation.

The team's unwavering passion for design shines through every detail, hoping to provide our visitors with an unforgettable experience in the heart of Sheffield's thriving creative landscape.







"We're selling unique designs that are going to stand the test of time and be passed down through the years, and Park Hill feels like the right space to do that in."

Nest's Managing Director,
Toni Anne Dunleavy



“
If you love concrete and modern
brutalist buildings, then it
doesn't get any better. It's an
ideal base for a business which
is rooted locally, and the perfect
home for our new, dedicated
design destination.
”

SCOTTISH QUEEN



How to find us

It's only a short 5-minute walk from the nearest tram stop or from Sheffield train station to the Nest Showroom and Park Hill Flats.

For visitors travelling by car there is limited free parking on South Street. Alternatively, there is on-site pay and display car park to the rear of the building at 105 Duke Street, Sheffield S2 5QL.

Nest Showroom

The Scottish Queen
21-24 South Street
Park Hill, Sheffield
S2 5QX
United Kingdom

Opening times

Monday to Saturday
10am to 4pm
Closed Sundays and
Bank Holidays



How to find us

Only a short 5-minute walk from the nearest tram stop and train station to the Nest Showroom and Park Hill Flats.



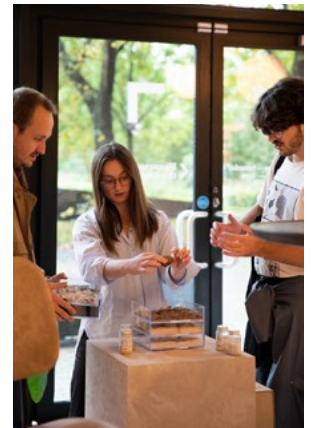
Pedestrian Routes

A space to learn and explore in.

More than just a showroom, Park Hill allows us to gather with our community and host design-led events.

Sustainability Matters With Mater

We dove into the heart of sustainability to discover what's next for eco-conscious design. Thought leaders, experts and enthusiasts gathered to talk on crucial topics like carbon action and delivering a positive environmental impact.





Ikebana workshop With Fritz Hansen

Bringing together some of our favourite content creators, we delved into the world of Ikebana, guided by the enchanting Fritz Hansen Ikebana Vase.

Designed by Jaime Hayon, the vase's clean, structured lines provided the perfect base for our seasonal flower arrangements.





Wishbone weaving With Carl Hansen & Son

Carl Hansen & Son shared with us the enduring craft of their most popular design, weaving a CH24 Wishbone Chair by hand using 120 metres of paper cord.

Elevate your surroundings with a little help from Nest.

Discover our free interior advice service, offering specialist one-to-one guidance, how and when it suits you.



The extra help you might need

Our interiors advice service offers bespoke, one-to-one recommendations and product suggestions to help you get the best out of your space.

Whether you're looking to re-style your entire home, discover the perfect finishing touch or simply need a hand finding an extra special gift, our team are on-hand to provide the help you need.



How it works

We understand the importance of making considered purchases for your home. After all, our designs are forever pieces designed to last and grow with you.

That's why we offer a personal interior advice service that is easy to use and provides all the support you might need.

Our service starts with understanding your budget and your ambitions for your space to gain insight into how we can help you and your interior project.

From there, you will be assigned a dedicated product specialist who will contact you to discuss your project further, providing one-to-one advice and bespoke product recommendations tailored to your space and your décor taste.

For those looking for an in-store consultation, we offer a one-hour complimentary service with one of our product specialists from our new Park Hill showroom.







“Nest listened to our preferences and requirements for lighting, seating and dining every step of the way, taking into account how the space would be used and provided us with an excellent choice of products.”

Daniela Folkes
Nest Customer



What the service provides

Showcasing great design from almost 100 brands, you'll be spoilt for choice with our enviable collection of furniture, lighting, and home accessories. Your dedicated product specialist will listen to your needs and help you discover the best of the Nest collection.

Our personal shopping service provides:

- Bespoke account management
- In-depth industry knowledge for home interiors
- Style guidance and product advice
- Mood board presentation
- Product specification and placement
- Exclusive prices, all year round
- Free mainland UK delivery
- Material samples from over 80 brands
- The opportunity to arrange delivery and installation with your product specialist in attendance (for local, larger projects)
- The opportunity for your home/ project to be photographed to feature within our 'real homes' series of journal articles and email newsletters
- Complimentary tea and coffee (for showroom consultations)





Meet the team

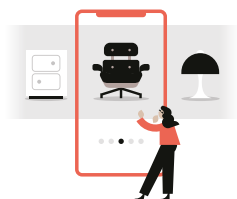
On hand to help inspire, offer advice and support, our Park Hill Sales Team have a wealth of design knowledge between them. Ready to assist you with product orders and help you choose the perfect products for your home or workplace.

Discover more about our interiors advice service and explore some of our favourite projects. ↗

From us... to you

Great design is most definitely worth the wait.

Your order journey



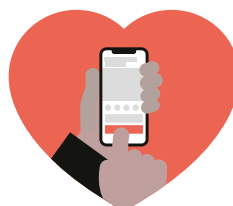
1

You can browse and be inspired by our collection of furniture, lighting, home accessories and gifts at **nest.co.uk** and in person at our **showroom at Park Hill**.



2

Having trouble deciding? Talk to our experts if you need any help with choosing, specifying or customising our products.



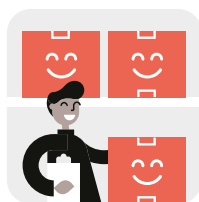
3

With just a few clicks, place an order for your chosen design. You can now shop in person at our showroom and our expert team is on hand to help. It's as simple as that.



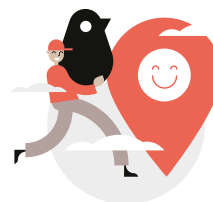
4

If your product is being made to order for you, our experienced brands craftspeople will begin manufacturing your product.



5

Your product will then be shipped to Nest with updates of progress OR if we already have your product in-stock it will be picked from our UK warehouse.



6

Wherever you are in the world, we will contact you to arrange a time to deliver your products, that works for you.



Made to order

After something a bit more bespoke? Many of our products are made to order, meaning you can specify finish, size & colour to suit you. This takes a little longer but we think great design is always worth the wait!

Email our sales team at info@nest.co.uk for more information on made to order products.



In stock & ready to ship

We stock up on your favourites to make ordering with us quicker. Discover our range of in-stock furniture, lighting and accessories at nest.co.uk/in-stock ↗



Reasons to shop

We are purveyors of beautiful, iconic, everlasting furniture. We care about what we sell and the service we provide to you.



We're independent, passionate and dedicated

We aren't a big corporate machine. Chat to a member of our committed personal customer service team who will love what you're buying as much as you do.



You'll be spoilt for choice

Our enviable collection of furniture, lighting, home accessories and gifts means there's something for everyone. The hardest part is in the choosing.



We deliver worldwide

We deliver to over 100 countries and aim get your products to you in 2-9 working days, depending where you are in the world.



Our experts are on hand

Our dedicated, professional specialists are on hand, Monday to Friday, 9am till 5pm (GMT) to help with any product advice, service questions or queries.



We guarantee authenticity

All of our products are the genuine article and epitomise quality and fine craftsmanship. Nothing we stock is fake, imitation or sub standard.



We're here to help

Nest.co.uk is open 24/7 and our knowledgeable sales team are available 9am~5pm (GMT) Monday to Friday.

Talk to us

+44 (0)114 243 3000

Live chat

Our experts are on hand at nest.co.uk

Email

info@nest.co.uk

Visit our showroom

Nest @ Park Hill
The Scottish Queen
21-24 South Street
Park Hill, Sheffield
S2 5QX
United Kingdom

Inside inspiration

Sign up for our emails and enjoy hearing about all things design.

Thank you

Feature Photography

Max Hawley — @maxhawley94

Support Photography

House of Finn Juhl, Vitra, &Tradition, Tala, Audo Copenhagen, Muuto, Fritz Hansen, HAY, ferm LIVING, USM, Montana, 101 Copenhagen, Artek, Carl Hansen & Son.



Hospitality Commercial Residential

nest.
CONTRACTS

Sourcing great design made easy.

With the worlds best brands under one roof and a choice of 20,000 products, Nest Contracts supply premium design with quality guaranteed. With over 15 years of experience, our industry specialists are on hand to help you furnish your next interior design project.

To discover our ever expanding collection and competitive trade prices, visit the Nest Contracts portal at nest.co.uk/contracts ↗

**The home of
forever furniture,
lighting, homeware
& unique gifts.**

**Discover our world
of forever design
at [nest.co.uk](https://www.nest.co.uk)**